

PEER Perfectly Pairs!



# Food Industry Chain Solutions

*To Keep You Running*

**MOTION**  
Motion.com

**PEER**  
CHAIN  
Quality Links That Last.™

**PEER**  
SPROCKETS  
PEER Perfectly Pairs.™



# Food & Beverage

*PEER Chain: Quality Links That Last!*



**Designed to keep you running —  
Day in and day out!**

When you are feeding a nation, you can't afford to worry about breakdowns. Backed by four generations of Performance, People and Passion, PEER Chain will keep you running!

## **PEER Chain Advantages**

- As a 4th generation privately held company, we invest in on-hand inventory for fast shipping.
- Chains designed specifically for food and beverage production and continuous operation.
- Chains available in carbon steel, stainless steel and ProCoat.
- High quality food-grade lubricant available to protect chains from wear in harsh environments.
- Comprehensive chain solutions to meet your needs!



### **Ingredients:**

Performance,  
People  
and Passion



# GOURMET MENU

## Available Features and Technologies

### Stainless Steel

304SS ("SS") – Stainless Steel anti-corrosive chain providing excellent corrosion resistance.  
 316SS ("MSS") – Stainless Steel with higher resistance to corrosive environments and to extreme temperatures than standard "SS."  
 600SS ("PHSS") – Stainless Steel suitable for applications where both strength and corrosion resistance are required.

### Quest™

Quest™ Solid Bushing Roller Chain is designed with solid one-piece cold forged bushings to decrease wear and outperform conventional split bushing roller chains.

### ProCoat™

ProCoat™ is corrosion resistant chain with the same high maximum working load as our standard carbon steel roller chain. Stronger, more impact resistant than stainless steel.

### Self-Lube

Oil impregnated sintered bushings for applications where it is difficult to access or maintain chain. Available in SL, SLB, and SLH Series. Contact PEER Chain for further details.

### Food-Grade Lube

PEER Chain offers food-grade lubrication on a variety of corrosion resistant chains. Contact PEER Chain for further details that will align with your needs and requirements.

### Attachment Chain

Engineered for a variety of applications, our expansive attachment chain inventory allows you to choose the attachment chains most suitable to your operation.

PEER Chain stocks a broad inventory of attachment chains and components ready for rapid shipment.

## INTERCHANGEABILITY GUIDE

#### SINGLE PITCH ROLLER CHAIN

Attachments for all Chains 35 - 160

Chain Attachment Description	PEER No.	Other Mfgs. No.
Bent Lug (One Side, One Hole)	A-1	A-1, B-1
Bent Lug (Two Sides, One Hole)	K-1	K-1, B-2
Straight Lug (One Side, One Hole)	SA-1	SA-1, M-35, M-1, S-1
Straight Lug (Two Sides, One Hole)	SK-1	SK-1, S-2, M-1, N-1
One Extended Pin on Pin Link	D-1	D-1, E-1, Ext. Pin
Two Extended Pins on Pin Link	D-3	D-3, E-2, Ext. Pins

#### DOUBLE PITCH ROLLER CHAIN

Attachments for all Chains C2040 - C2160H  
& C2042 - C2162H

Chain Attachment Description	PEER No.	Other Mfgs. No.
Bent Lug (One Side, One Hole)	A-1	A-1, B-1, B-1-1
Bent Lug (Two Sides, One Hole)	K-1	K-1, B-2, B-2-1
Bent Lug (One Side, Two Holes)	A-2	A-2, B-1, B-1-2
Bent Lug (Two Sides, Two Holes)	K-2	K-2, B-2, B-2-2
Straight Lug (One Side, One Hole)	SA-1	SA-1, M-35, S-1, M-2, S-1-1
Straight Lug (Two Sides, One Hole)	SK-1	SK-1, M-1, S-2, S-2-1
Straight Lug (One Side, Two Holes)	SA-2	SA-2, M-2, M-35-2, S-1, S-1-2
Straight Lug (Two Sides, Two Holes)	SK-2	SK-2, M-2, S-2, S-2-2
One Extended Pin on Pin Link	D-1	D-1, E-1, Ext. Pin
Two Extended Pins on Pin Link	D-3	D-3, E-2, Ext. Pins



# *From Roller Chain to Engineering Chain, We've Got the Chain You Need to Feed A Nation!*

## Food & Beverage Chains



**Stainless Quest™ Solid Bushing & Solid Roller**



**Stainless Quest™ Solid Bushing & Solid Roller Double Pitch**



**Stainless Steel Chain with Delrin Rollers**



**Case Conveyor Chain**



**Overhead Conveyor Chain**



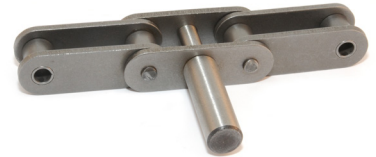
**Self Lube Chain**



**ProCoat™ Chain**



**Gripper Chain**



**Packing House Chain**



**MOTION**  
Motion.com



# *From Roller Chain to Engineering Chain, We've Got the Chain You Need to Feed A Nation!*

## **Food & Beverage Chains and Sprockets**



**Stainless Hollow Pin Chain**



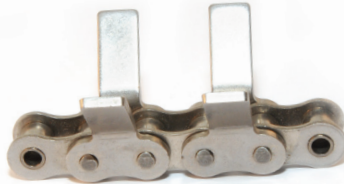
**Stainless Poly Chain**



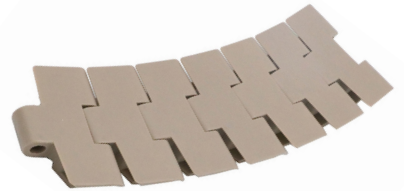
**Sugar Chain**



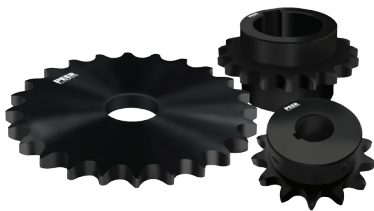
**Poultry Chain**



**Corn Head Chain**



**Flat-Top Plastic Chain**



**Standard Sprockets**



**Idler Sprockets**



**Stainless Steel Sprockets**



**MOTION**  
Motion.com





**Dan Troxell,  
Warehouse & Fulfillment  
Center Manager**

For a retired Marine like Dan (Trox to his friends), "quit" is not a part of his vocabulary! He works tirelessly with his team to ensure every shipment leaves his warehouse on time and up to our customers' expectations.



**Kevin Shrout,  
National Sales  
Manager**

Like a master chef, Kevin identifies the strengths of those around him and then works to coax those qualities to success. With more than 30 years of experience in distribution, it has proven a winning recipe!



**Nety Park,  
Technical Product  
Manager**

As a detail-oriented, team player, Nety finds happiness in helping others to solve problems. Like a superhero in one of her favorite movies, managing your most complex projects is something she enjoys doing every day!



**Art Merwitz,  
Director,  
Sprocket Division**

There's only one way to describe Art — a true die-hard! Whether his beloved Cubs or Sprockets, his passion is palpable. You can be sure that when you need a sprocket, Art is your guy to ensure it is perfectly paired!



**Eric Ma,  
Manager of Engineering  
& Quality**

A more befitting title could not be given to Eric, unless it also included something about his strength of character. Engineering and quality is what Eric lives, breathes, and embodies day in and day out.



**Jeremy Fogo,  
Vice President of  
Product, Solutions &  
Experiences**

A consummate people person, Jeremy finds the work he does with PEER customers incredibly rewarding. Being able to solve challenges for PEER customers is something that gets Jeremy out of bed each morning.



**Chuck Briere,  
Vice President of  
Strategic Alliances**

What do you say about a guy who has been in the power transmission business for over 40 years? Chuck loves selling chain. Why? Because chain is a technical product, and he enjoys the mechanics and science of it.



**Drew Beadle,  
Product Manager**

Drew grew up as a sponge surrounded by industrial and farm equipment. His quest to absorb technical and practical knowledge created an expertise in analyzing and creating quality customer solutions for all stakeholders.