

PEER Citrus Chain

Packing Made Perfect!

At **PEER Chain**, we know the challenges citrus packers face each and every day. We also know the conditions you work in demand efficiency and reliability.

- D-5 attachment pins are designed to help you move large amounts of fruit without costly downtime.
- Available **ProCoat**® provides corrosion resistance while delivering the durability of carbon steel chain.
- **PEER Quest**® solid bushing chain with one-piece cold formed bushings extend chain life over conventional split bushing chains.
- **PEER ProCoat Quest**® - our Citrus Chain where carbon steel's durability is desired with ProCoat corrosion resistance and Quest solid bushing to maximize performance and extend chain life.

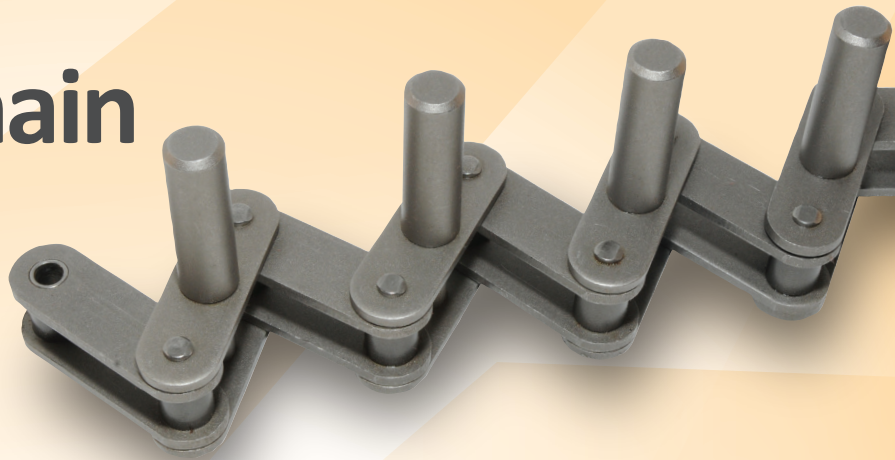
Stay ahead of the competition.
With innovative citrus chain
from **PEER Chain**.



MOTION
Motion.com

PEER Citrus Chain

Every Way You Want It.

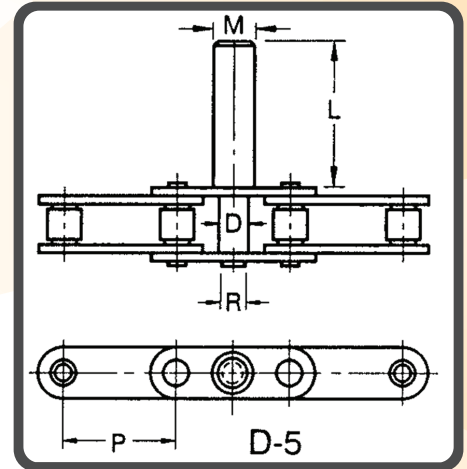


D-5 Attachments

Dimensions: Inch

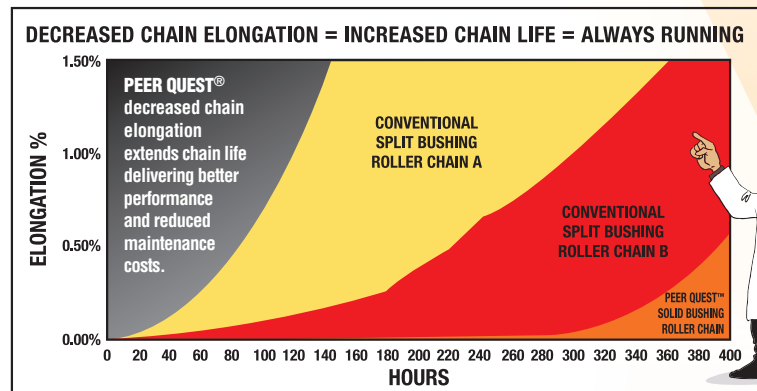
PEER Chain No.	Pitch P	L	M	R	D
D-5-A	1.500	1.625	0.500	0.318	0.313
D-5-B	1.500	1.625	0.562	0.309	0.303
D-5-C	1.500	1.625	0.500	0.318	0.218

NOTE: D-5 Chains Available in Carbon, Steel, Nickel Plated, Stainless Steel, ProCoat® and **PEER Quest®**.



PEER QUEST® Technology Features & Benefits

- Shot-peened for greater fatigue resistance.
- Pre-loaded after assembly to minimize initial chain elongation.
- Hot-dipped lubrication ensures 100% coverage of chain components, reducing friction, minimizing the need for maintenance and extending chain life.
- PEER QUEST®** Technology features solid bushing chain with one-piece, cold formed bushings which extend chain life over conventional split bushing chains. Extended chain life equals better performance and reduced maintenance costs.
- PEER ProCoat Quest®** – where carbon steel's durability is desired with **ProCoat®** corrosion resistance and Quest solid bushings maximize performance and extend chain life.



"Let PEER Provide MRO RELIEF!"
Uncle Linc

