

Mr. Linc says, "For Lots
More Timberrrr!"



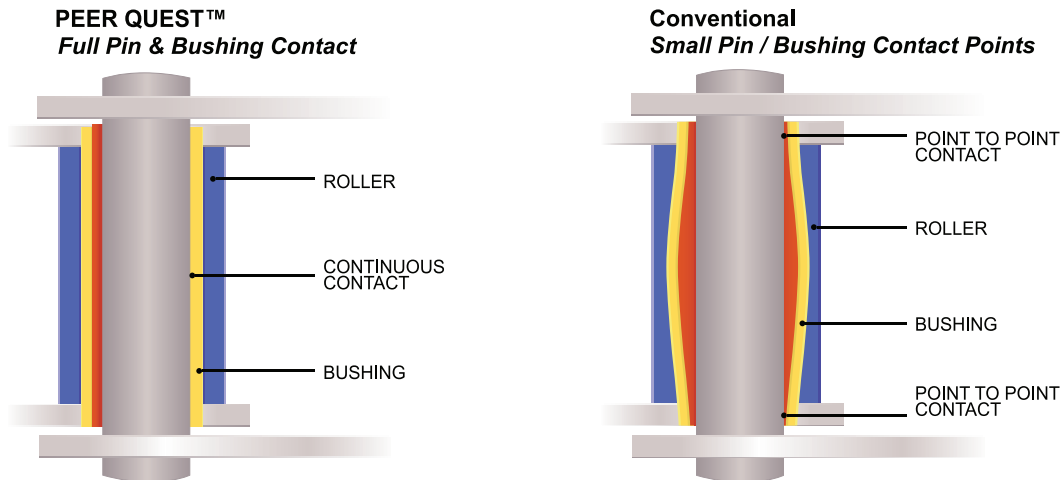
**More Board Feet
for Your Dollars Today!**



PEER
CHAIN

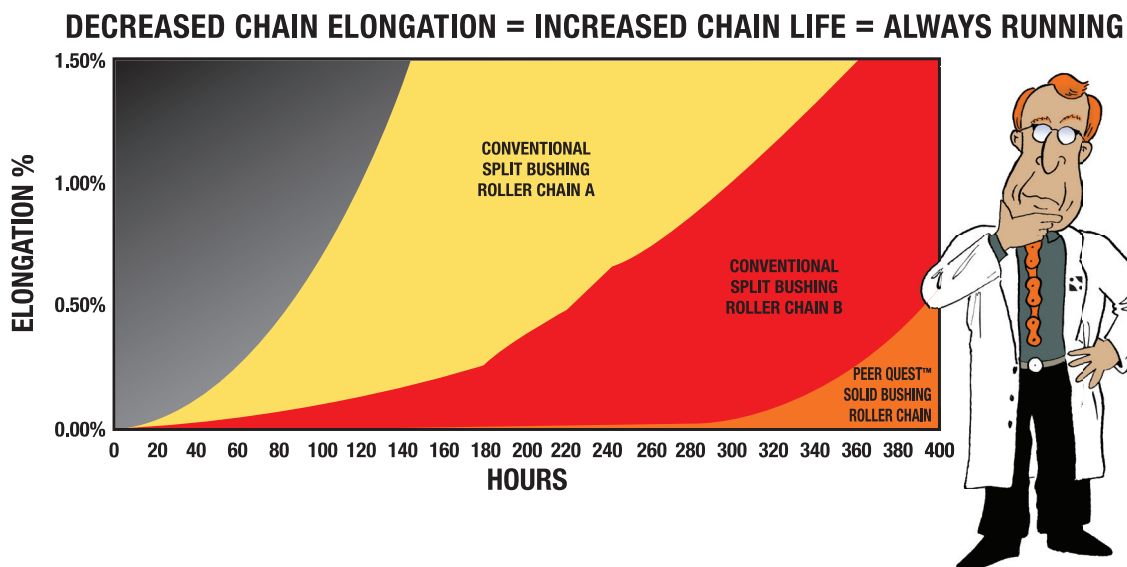
Keeps You Running™... Longer and Longer!

Peer Quest™ Solid Bushing Roller Chains Deliver More Board Feet than Split Bushings Assuring Longer Life – Better Performance



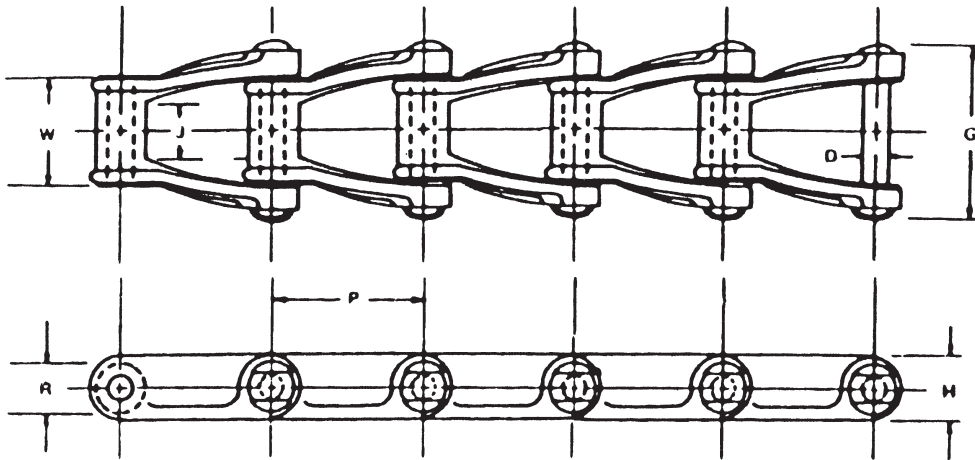
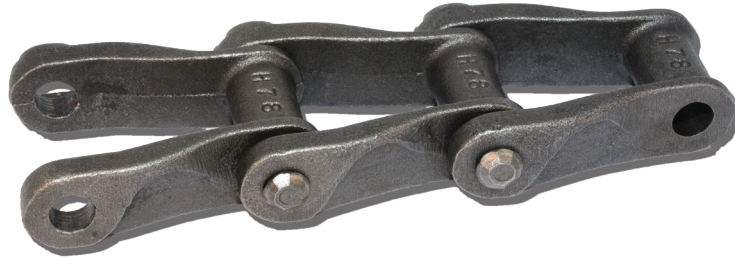
Peer Quest™ is the perfect union of Material Science and Process Technology delivering to mills Better Value and therefore Better Bottom Lines by Keeping You Running Longer.

Peer Quest™ Solid Bushing Technology beat split bushings which exhibit life-shortening chain elongation requiring replacement or worse, throughput stoppages due to chain failures. Peer Quest™ loyalists report “greater life – offer 2X and even 3X greater throughput” than their prior split bushing cheaper alternative. Peer Quest™ is truly “The Smarter Buy” Throughput Champ.



“H” Type Mill Chains

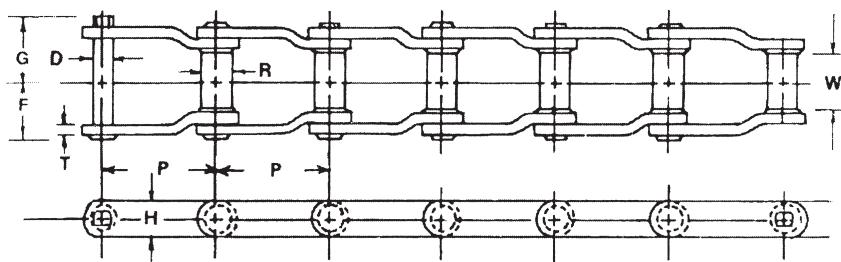
This chain has reinforced side bars to strengthen malleable iron links and provide extra wear surfaces whether operating in a trough, or over floors. As a drive, this is a performance proven chain.



PEER Part No.	ANSI No.	Pitch P	Bearing Area Width Over Bearing W	Bearing Area Diameter R	Bearing Area Max. Allow Sprocket Face J	Pin Diameter D	Plate Height H	Overall Width Rivited G	Average Tensile Strength Lbs.	Average Weight Per Foot Lbs.
H60	H60	2.308	1.500	0.750	0.750	0.312	0.750	2.530	7,000	2.10
H74	H74	2.609	1.656	0.875	1.000	0.375	1.000	2.875	10,000	3.00
H78	H78	2.609	1.875	0.875	1.125	0.500	1.125	3.813	16,000	4.20
H82	H82	3.075	2.125	1.218	1.250	0.562	1.250	3.875	20,000	5.50
H124	H124	4.000	2.750	1.438	1.625	0.750	1.562	4.875	30,000	8.80

Welded Steel & Wide Series Drag Chain

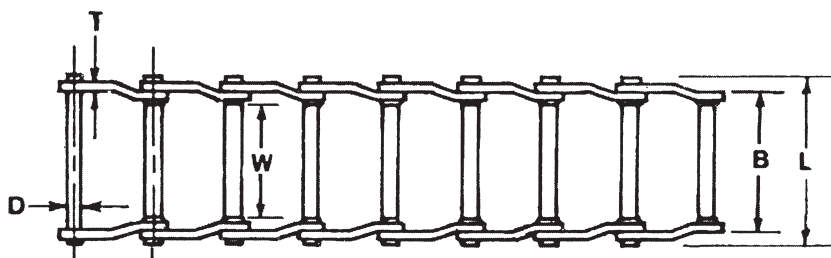
PEER's welded chain is designed and manufactured to provide the utmost in strength, durability and dependability. Mills agree these are perfect choices for forestry applications that are usually in rough and abrasive environments. PEER's welded chains include welded mill chain and welded drag chains. Depending on your needs, we can provide the chain with the pins heat-treated or with all components heat-treated. Peer Welded Steel and Drag Chains are designed to withstand heavy shock loads and difficult operating conditions with long center distances.



PEER Part No.	ANSI No.	Pitch P	Bushing Width W	Bushing Diameter R	Plate Height H	Plate Thickness T	Pin Diameter D	Overall Width F	Overall Width G	Unit of measure inches or millimeter	Average Tensile Strength Pin Heat Treated	Average Tensile Strength All Heat Treated	Average Weight Per Foot Lbs.
WR78	WR78	2.609	1.125	0.875	1.120	0.250	0.500	1.500	1.625	in	21,000	–	4.40
WH78	WH78	2.609	1.125	0.875	1.120	0.250	0.500	1.500	1.625	in	–	24,000	4.40
WR82	WR82	3.075	1.250	1.125	1.250	0.250	0.562	1.623	1.798	in	22,500	–	5.50
WH82	WH82	3.075	1.250	1.125	1.250	0.250	0.562	1.623	1.798	in	–	29,500	5.50
WR106	WR106	6.000	1.625	1.375	1.500	0.375	0.750	2.204	2.412	in	38,000	–	7.00
WH106	WH106	6.000	1.625	1.375	1.500	0.375	0.750	2.204	2.412	in	–	50,500	7.00
WR110	WR110	6.000	3.000	1.250	1.500	0.375	0.750	2.156	2.395	in	38,000	–	6.65
WH110	WH110	6.000	3.000	1.250	1.500	0.375	0.750	2.156	2.395	in	–	50,500	6.65
WR111	WR111	4.760	2.250	1.375	1.500	0.375	0.750	2.467	2.584	in	38,000	–	6.30
WH111	WH111	4.760	2.250	1.375	1.500	0.375	0.750	2.467	2.584	in	–	50,500	6.30
WR124	WR124	4.000	1.625	1.375	1.500	0.375	0.750	2.219	2.340	in	38,000	–	8.50
WH124	WH124	4.000	1.625	1.375	1.500	0.375	0.750	2.219	2.340	in	–	50,500	8.50
WR132	WR132	6.050	3.000	1.625	2.000	0.500	1.000	3.097	3.451	in	62,000	–	13.30
WH132	WH132	6.050	3.000	1.625	2.000	0.500	1.000	3.097	3.451	in	–	76,000	13.30
WR150	WR150	6.050	3.000	1.750	2.500	0.500	1.000	3.062	3.274	in	67,000	–	15.70
WH150	WH150	6.050	3.000	1.750	2.500	0.500	1.000	3.062	3.274	in	–	90,000	15.70
WR155	WR155	6.050	2.750	1.750	2.500	0.562	1.125	3.227	3.382	in	95,000	–	18.10
WH155	WH155	6.050	2.750	1.750	2.500	0.562	1.125	3.227	3.382	in	–	102,000	18.10

Welded Steel & Wide Series Drag Chain

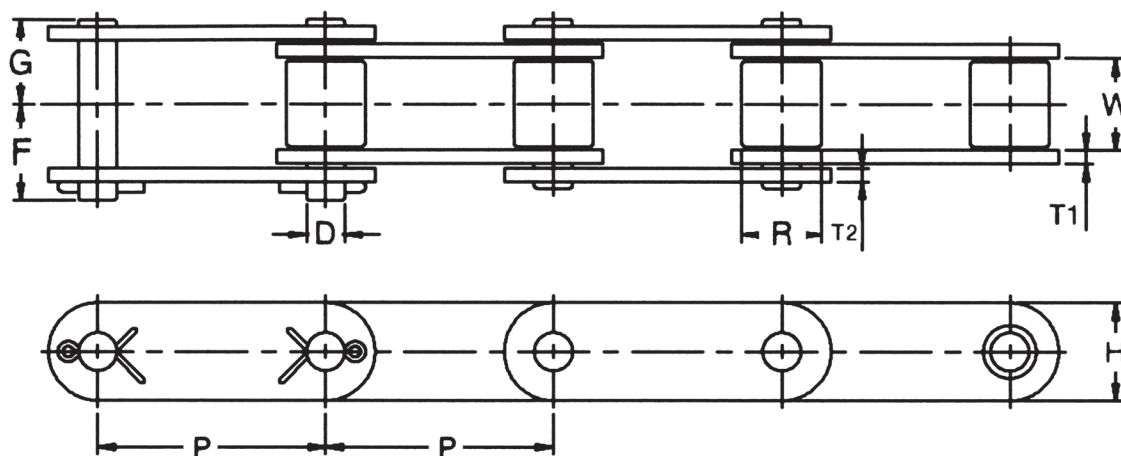
PEER's welded chain is designed and manufactured to provide the utmost in strength, durability and dependability. Mills agree these are perfect choices for forestry applications that are usually in rough and abrasive environments. PEER's welded chains include welded mill chain and welded drag chains. Depending on your needs, we can provide the chain with the pins heat-treated or with all components heat-treated. Peer Welded Steel and Drag Chains are designed to withstand Heavy shock loads and difficult operating conditions with long center distances.



PEER Part No.	ANSI No.	Pitch P	Bushing Width W	Length of Bearing B	Plate Height H	Plate Thickness T	Pin Diameter D	Overall Length Over Rivet L	Average Tensile Strength Pin Heat Treated	Average Tensile Strength All Heat Treated	Average Weight Per Foot Lbs.
WD102	WD102	5.000	6.500	7.750	1.500	0.375	0.750	9.125	38,250	—	10.80
WDH102	WDH102	5.000	6.500	7.750	1.500	0.375	0.750	9.125	38,250	55,000	10.80
WD104	WD104	6.000	4.125	5.375	1.500	0.375	0.750	6.750	38,250	—	8.50
WDH104	WDH104	6.000	4.125	5.375	1.500	0.375	0.750	6.750	—	55,000	8.50
WD110	WD110	6.000	9.000	10.375	1.500	0.375	0.750	11.750	38,250	—	13.35
WDH110	WDH110	6.000	9.000	10.375	1.500	0.375	0.750	11.750	—	55,000	13.35
WD112	WD112	8.000	9.000	10.375	1.500	0.375	0.750	11.750	38,250	—	11.20
WDH112	WDH112	8.000	9.000	10.375	1.500	0.375	0.750	11.750	—	55,000	11.20
WD116	WD116	8.000	13.000	14.125	1.750	0.375	0.750	15.500	55,000	—	15.70
WDH116	WDH116	8.000	13.000	14.125	1.750	0.375	0.750	15.500	—	59,000	15.70
WD480	WD480	8.000	12.750	12.750	2.000	0.500	0.875	14.625	70,000	—	19.00
WDH480	WDH480	8.000	12.750	12.750	2.000	0.500	0.875	14.625	—	79,000	19.00

81X Lumber Chains

This chain is designed for heavy duty operation under severe conditions. All parts machined and heat treated. This chain is used for sorting and conveying applications and is offered in standard, heavy, and heavy/heavy series. Transfer Conveyor chains are designed for heavy duty operation under severe conditions. Upon Request Peer can provide 81X & 81XH with solid bushings for increased wear life with quad staked pins to handle your heavy loads!



PEER Part No.	ANSI No.	Pitch P	Roller Width W	Roller Diameter R	Plate Height H	Plate Thickness T1	Plate Thickness T2	Pin Diameter D	Overall Width F	Overall Width G	Unit of measure inches or millimeter	Average Tensile Strength Lbs.	Average Weight Per Foot Lbs.
81X	81X	2.609	1.062	0.905	1.122	0.156	0.156	0.437	0.937	1.125	in	27,500	2.50
81X HVY	81X HVY	2.609	1.062	0.905	1.122	0.312	0.218	0.437	1.188	1.343	in	43,500	3.40
81X H/H	81X H/H	2.609	1.062	0.905	1.122	0.312	0.312	0.437	1.260	1.430	in	46,400	4.30

Rooftop Transfer Chains

Many different types and styles are offered for operation under heavy, concentrated loads generally in troughs where product is conveying long distances.

H78A



H78B



H130A



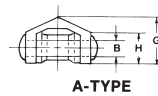
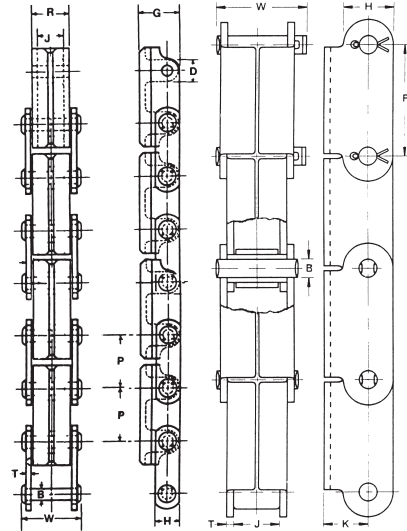
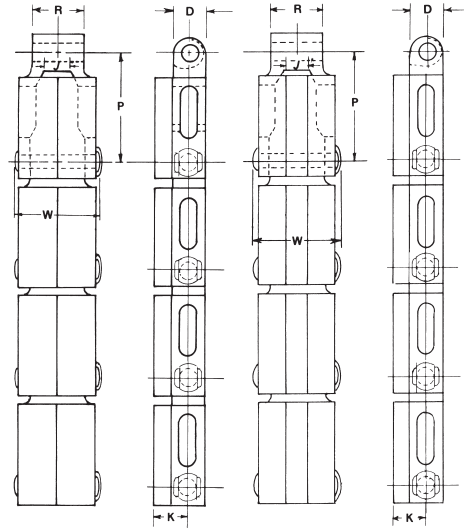
H138B



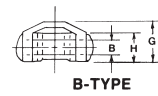
C55D



**81X
Rooftop**



A-TYPE



B-TYPE



D-TYPE

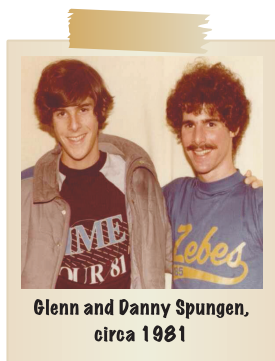


81X

PEER Part No.	ANSI No.	Rooftop Style	Pitch P	Overall Width Over Pin Riveted W	Diameter of Barrel D	Overall Width Over Bearing R	Diameter of Pin B	Max Allow Sprocket Face J	Height of Side Plate H	Center of Pin to Top of Rooftop K	Overall Height H	Thickness of Sidebar T	Unit of measure inches or millimeter	Average Weight Per Foot Lbs.
H78	H78	A	2.609	3.250	0.875	1.875	0.500	1.125	1.000	1.125	1.687	—	in	6.15
H78	H78	B	2.609	3.250	0.875	1.875	0.500	1.125	1.000	1.125	1.687	—	in	6.15
H130	H130	A	4.000	3.250	1.000	1.625	0.500	1.000	1.125	1.156	1.687	—	in	5.38
H138	H138	B	4.000	3.250	1.000	1.625	0.500	1.000	1.062	1.156	1.687	—	in	5.71
C55	C55	D	1.631	2.000	0.719	1.187	0.375	0.687	0.750	0.875	1.250	0.187	in	3.15
81X	81X	—	2.609	1.874	0.905	—	0.437	1.060	1.122	1.000	1.550	0.156	in	2.95



Toll Free: +1.800.523.4567
Phone: +1.847.775.4600
Fax: +1.847.775.4650
www.peerchain.com
sales@peerchain.com



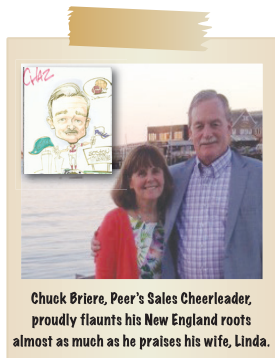
Glenn and Danny Spungen,
circa 1981

At Peer we are proud to be a family owned, personally-run company. My brother, Danny Spungen, and I spent our young summers and weekends on the Southside of Chicago, packing boxes, punching holes in papers for sales binders, running the postage meters, painting the Warehouse Racks "Peer Orange" and wearing trendy Peer Chain belts that eventually were confiscated at the Denver Airport in 1976. Our best memories of early adulthood were Saturdays when we were in the office and distributors called in need of "emergency" shipments. We would literally climb into the racks like monkeys, find the parts, pack them up with a handwritten note and drive them over to UPS¹. On Monday mornings the plant managers were always curious about "what kind of clean-up would be required from our acts of kindness."

During those early years we learned lots of lessons that formed Peer's heart and soul. Grandpa Nate and Uncle Oscar would always say, "when a customer calls saying they need their order tomorrow, we can come back and say of course...we always keep that around for you because we know you, and you always order the day before you need it!"

Loyalty counts a lot with us. To this day we continue being extremely sensitive to anticipating the needs of our customers, and as a result, stock our shelves with chain for a wide variety of industries. Perhaps it's time you give Peer Chain a try; where a handshake is better than a contract, inventory is deep for our partners, and relationships truly matter.

¹We still work this way though Danny, now V.P. Strategic Directions, and I aren't allowed on the shelves any more for safety reasons. The day before I wrote this a regular customer called at 5:30 CST needing 80 – 3HR x 10FT. Our warehouse manager picked the chain, packaged it for shipping and got it on our 6pm UPS truck. We still "Officially say" – same day shipment for orders received by 2 pm CST. I'm just saying, Loyalty always counts for a lot at Peer Chain.



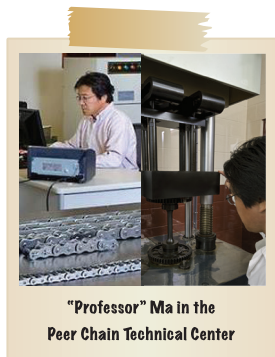
Chuck Briere, Peer's Sales Cheerleader,
proudly flaunts his New England roots
almost as much as he praises his wife, Linda.

Chuck "The Colonel" Briere – Chuck is a retired U.S. Army reservist who has sold most major chain manufacturers' products virtually all his professional career. A habitual road warrior with the world's most supportive wife, Chuck has been on the distribution side as well as the manufacturing side. In 2013 Chuck decided to do something "wacky" and joined family-owned Peer Chain as Eastern Region Sales Manager. Four Months later, having passed the Spungen Sniff Test, Chuck was named Peer Chain National Sales Manager. We are considering changing his moniker to, "Up Versus Year Ago" because that's how it's been since Chuck joined Peer.



Jeremy Fogo with wife, Anne Marie, celebrating
at Walt Disney World, Orlando, with Jeremy
and Kaitlyn during an earlier visit.

Jeremy Fogo – Product Manager, has been with PEER Chain for 17 years and knows the product line-up by heart. He works hand in hand with our customers sharing his vast knowledge of products and applications. That is the dedication you get from Jeremy, nearly two decades of service to PEER Chain's customers, distributors, attachés, and sales force. He brings the same thoroughness in upbringing his kids, often seen at the pool supporting his daughter who is an avid swimmer or helping his son nail parallel parking. Jeremy also knows where and when the lines at Disney are the shortest. Give him a call and experience the joy of being "Fogged". You will appreciate the way Jeremy can help "Keep You Running" and the way he helps so many others with PEER Chain genius products.



"Professor" Ma in the
Peer Chain Technical Center

Eric Ma, Engineering and Quality Manager, can also be called "The Professor". Eric holds 3 University Degrees: Material Science B.S.; Chemical Engineering M.S.; and a Computer Science M.S. Additionally, he is a Certified Professional in Supply Management. In many areas he wrote the programs which run warehouses, handle the supply chain and assure that our chains will truly keep you running. As you might expect, don't go against Eric in a game of Mahjong. But if you have a chain problem, Eric will find the solution for you. And he will do it with a smile.

DISTRIBUTED BY:

