

Mr. Linc says, "Quest is
Good 4 Mills!"



PEER QuestTM Sharp Top Chain

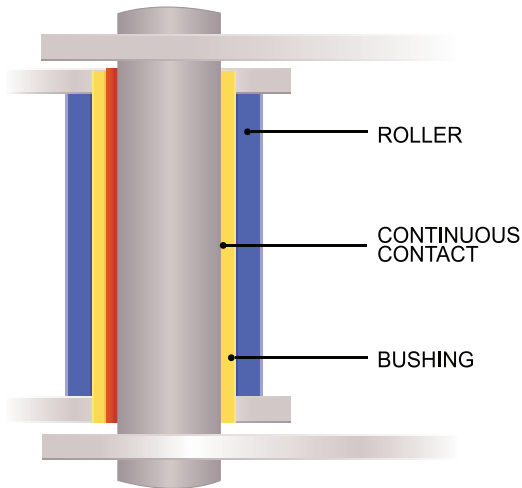


**QuestTM Solid Bushings = Solid Value
So You Run Longer!**

PEER
CHAIN
Keeps You RunningTM

Peer Quest™ Solid Bushing Users Report X+, 2X, 3X+* Chain Running Life

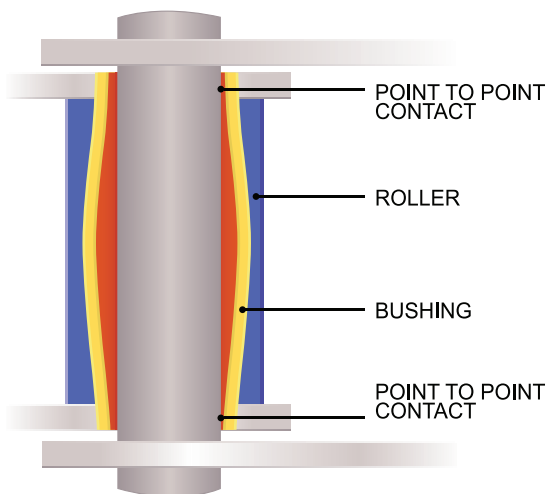
PEER QUEST™
Full Pin & Bushing Contact



All Sharp Top Peer Quest™ Chain feature solid, one-piece cold forged bushings. Peer Quest™ Solid Forged Bushings provide smoother, more cylindrical inside bushing walls. Solid Bushing Walls maintain linear contact between the pin and the bushing along the entire inside length. (See illustration immediately left) That's why Peer Quest™ Solid Bushings don't deform when pressed into the roller link inside plates the way typical split bushings do.

***Field Reports Confirm – Peer Quest™ Sharp Top Chains
run longer than conventional split bushing roller chains –
Longer Running = More Profit For You!***

Conventional
Small Pin / Bushing Contact Points



Conventional roller chains use bushings made from flat steel curled into shape. This causes a buckling or barreling effect when pressed into the roller link sideplates. As a result, the only contact is a “point to point contact” which leads to premature wear reducing the roller chain's length of run. (See illustration immediately left.)

***Conventional Split Bushings Wear Faster
Requiring Early Replacement = Less Profit for You!***

*You Know Every Mill is Different So Your Results May Vary But They'll Be Better with Peer Quest vs. Split Bushings.

Peer Quest™ Sharp Top Chains Deliver Solid Value

Solid Bushings Let You Run Longer

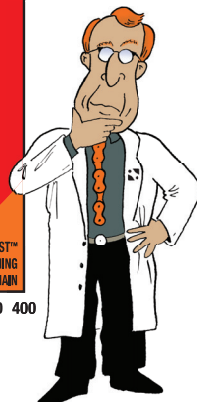
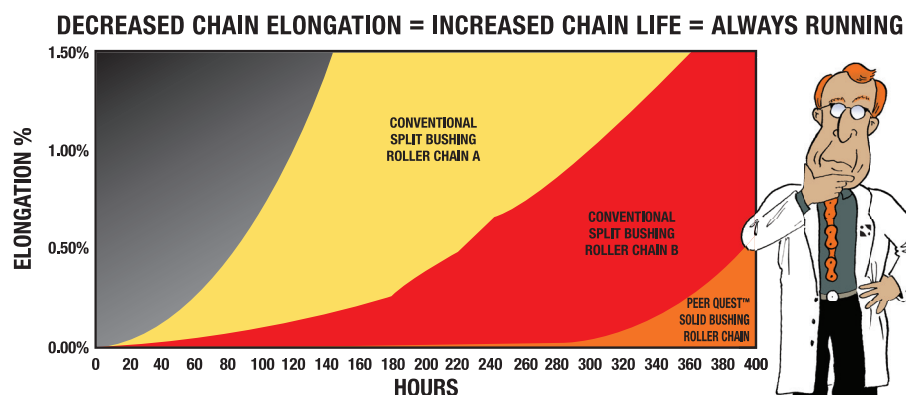
It is hard running sawmills that make a lot of money. Keeping everything running at speeds needed to be profitable with little waste and down time calls for great skill, the right equipment and gifted people. Peer Quest™ Sharp Top Chains are one smart decision that positively boosts your throughput.

Peer Quest™ Sharp Top chains combine design expertise and material strength providing added durability so you run longer at a price that equals *Real Value* producing bigger profits. And Peer Chain backs this all up with inventory support that Keeps You Running™.

Peer Quest™ Sharp Top Chain Delivers Reduced Elongation

Peer Quest™ Solid Bushing Sharp Top Chains are designed to decrease wear and run longer than conventional split bushing roller chains. Each Peer Quest™ chain is pre-loaded after assembly to reduce initial chain elongation.

The table below shows the longer run improvement Peer Quest™ delivers by decreasing chain elongation thereby increasing your chain life so your mills can run longer.



PEER QUEST™ SHARP TOP ADVANTAGES

- PEER offers the most requested Sharp Top designs in single, double, triple and quadruple variations
- Low tip profile diminishes loss from bruising
- Precise tooth sharpness gives the required grip for the least penetration
- Solid center plate design sharply curtails breakage from sawdust and chip compaction
- PEER Quest™ technology for added durability
- Optional Machined Smooth Bottoms to reduce damage to the chain beds
- Optional ProCoat™ process provides unrivaled resistance to corrosion

**PEER
CHAIN**
Keeps You Running™

Contents



80R Quest™ 3P EL Pg. 5



100R Quest™ 3P E2LP Pg. 10



80R Quest™ 3p E2LP Pg. 6



100-2R Quest™ 3P E2LP Pg. 10



80-2R Quest™ 3P E2LP Pg. 6



100R Quest™ SL E2LP Pg. 11



80-3R Quest™ 3P E2LP Pg. 7



100-2R Quest™ SL E2LP Pg. 11



80-4R Quest™ 3P E2LP Pg. 7



60 Quest™ 3P E2LP Pg. 12



80R Quest™ SL E2LP Pg. 8



60-2R Quest™ 3P E2LP Pg. 12



80-2R Quest SL E2LP Pg. 8

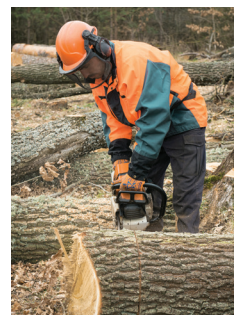


60-3R Quest™ 3P E2LP Pg. 13

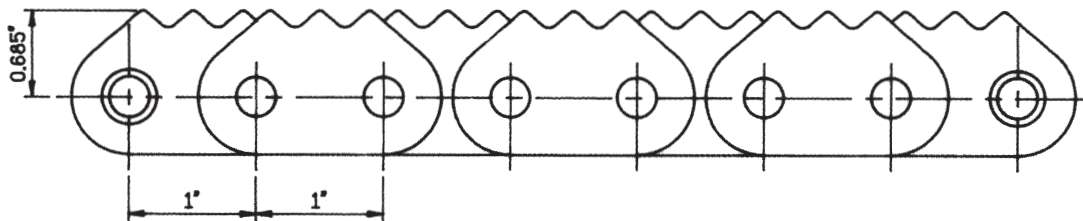
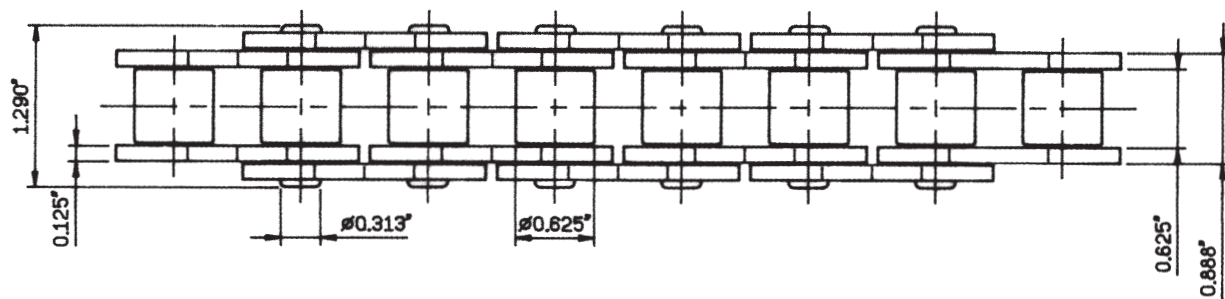


80-4R Quest™ SL E2LP Pg. 9

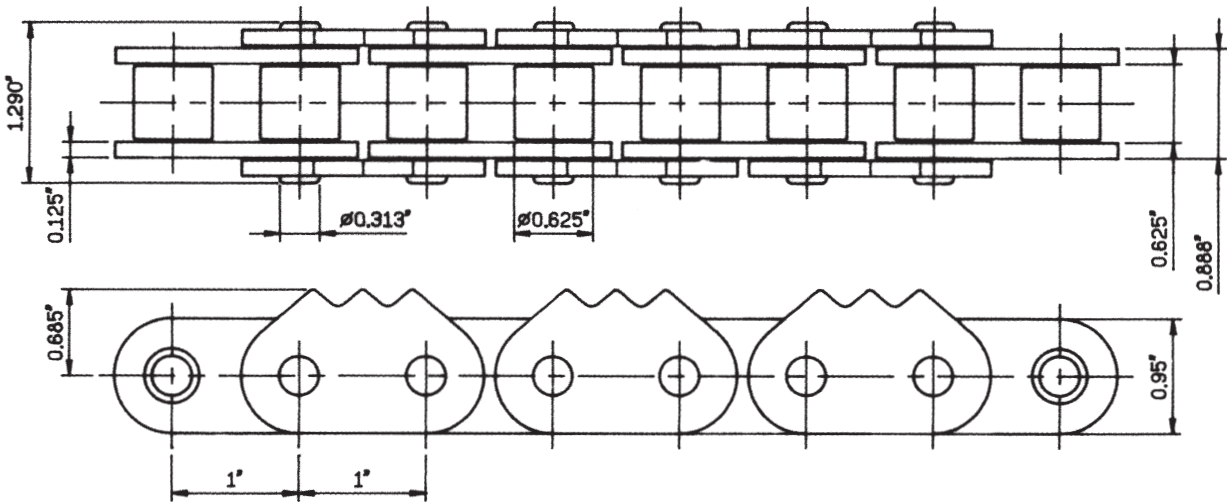
Specifications Pg. 14-15



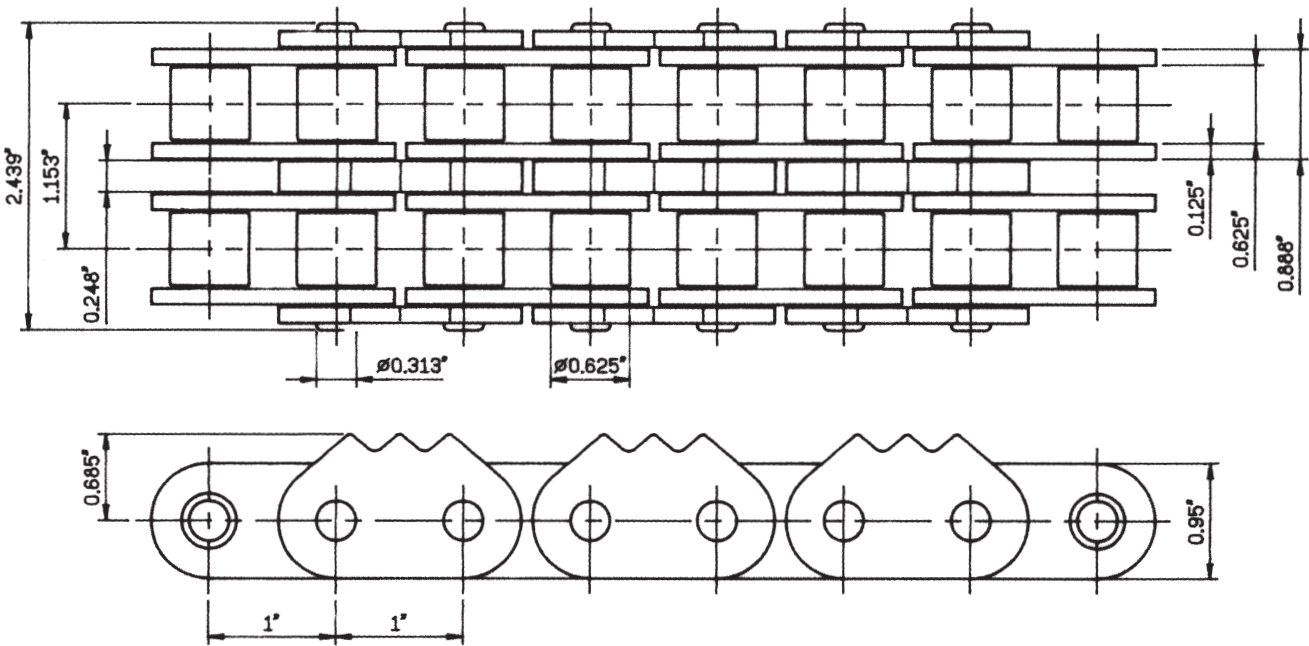
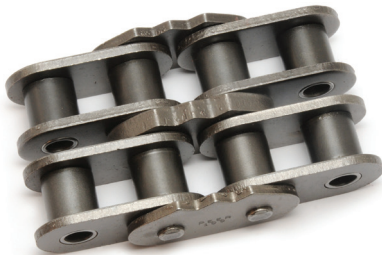
80R Quest™ 3P EL



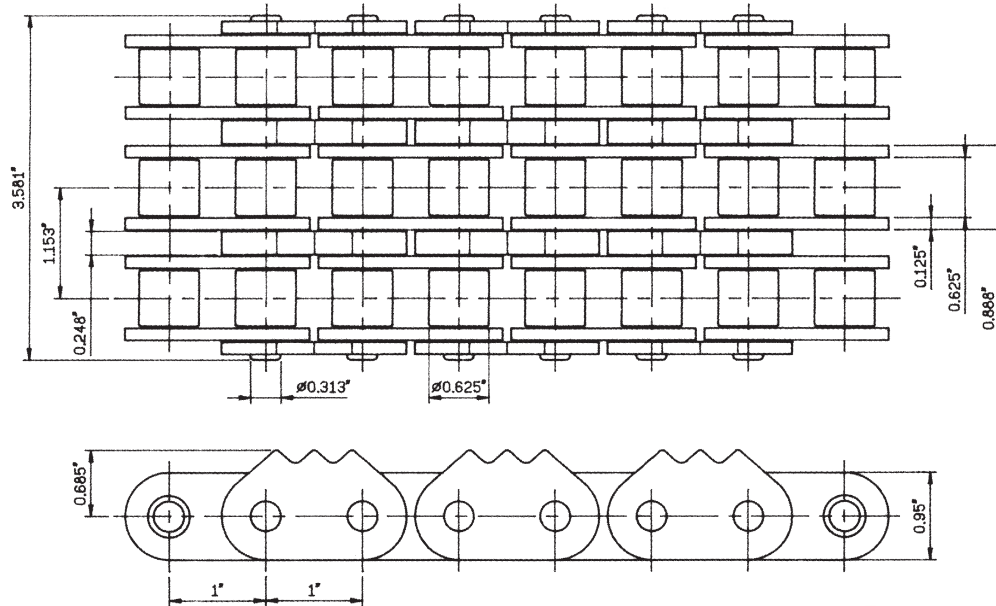
80R Quest™ 3P E2LP



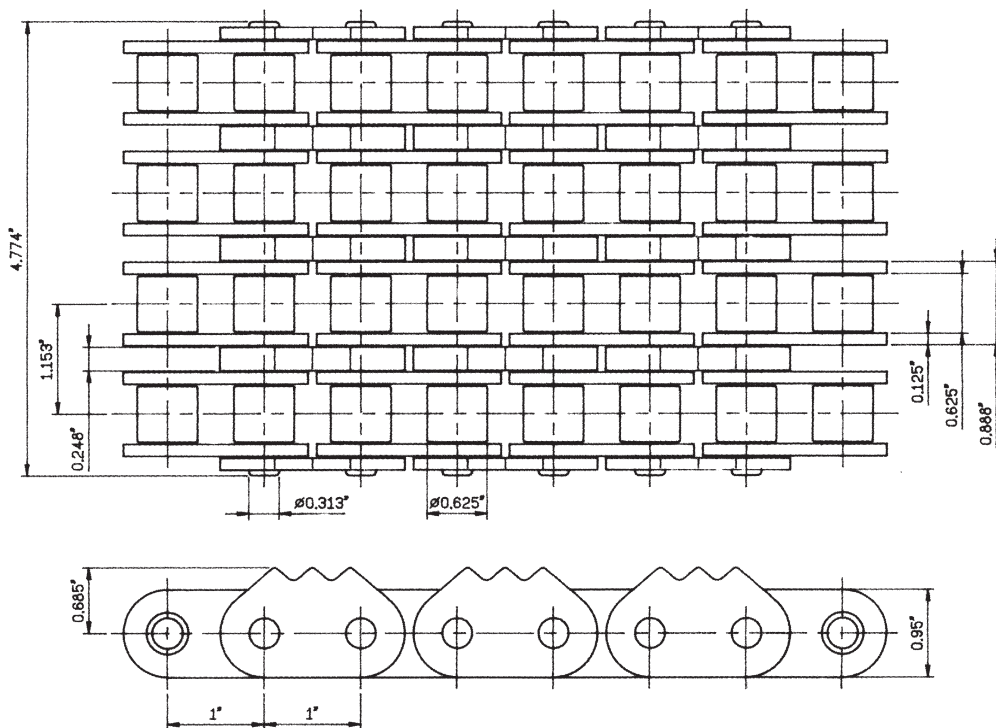
80-2R Quest™ 3P E2LP



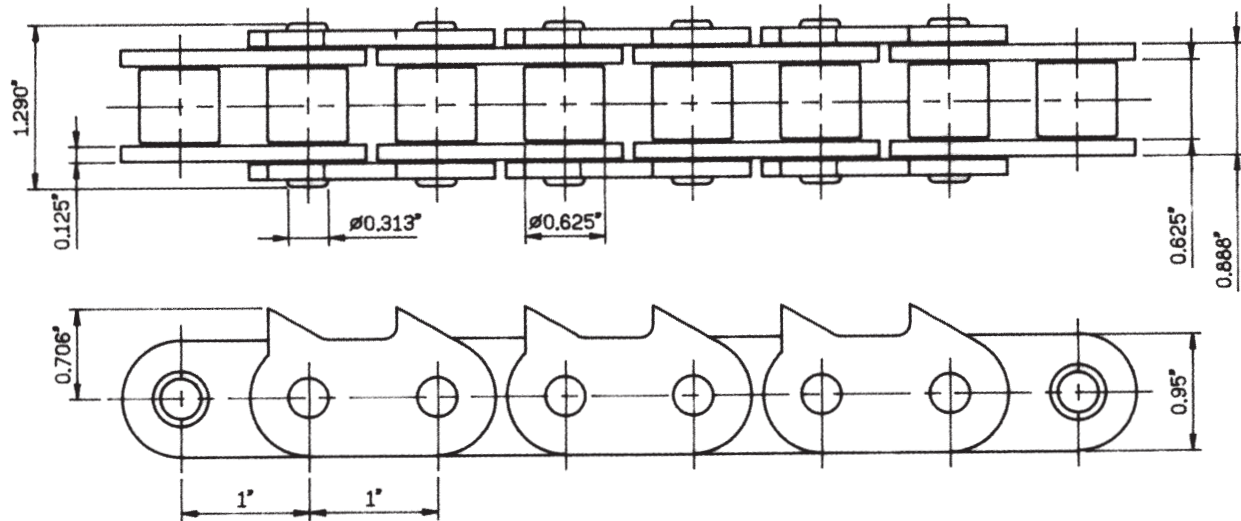
80-3R Quest™ 3P E2LP



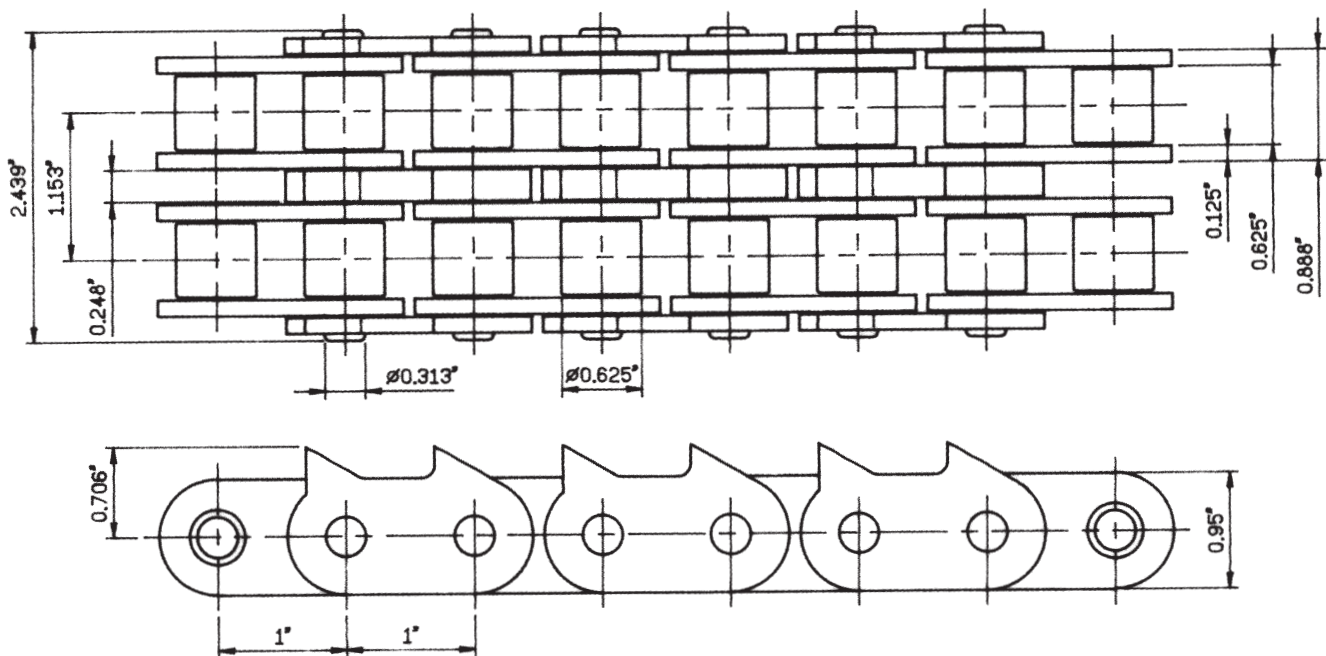
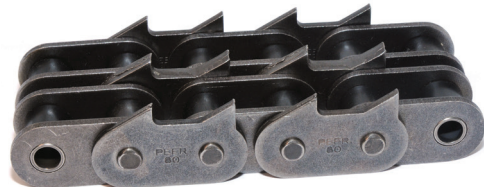
80-4R Quest™ 3P E2LP



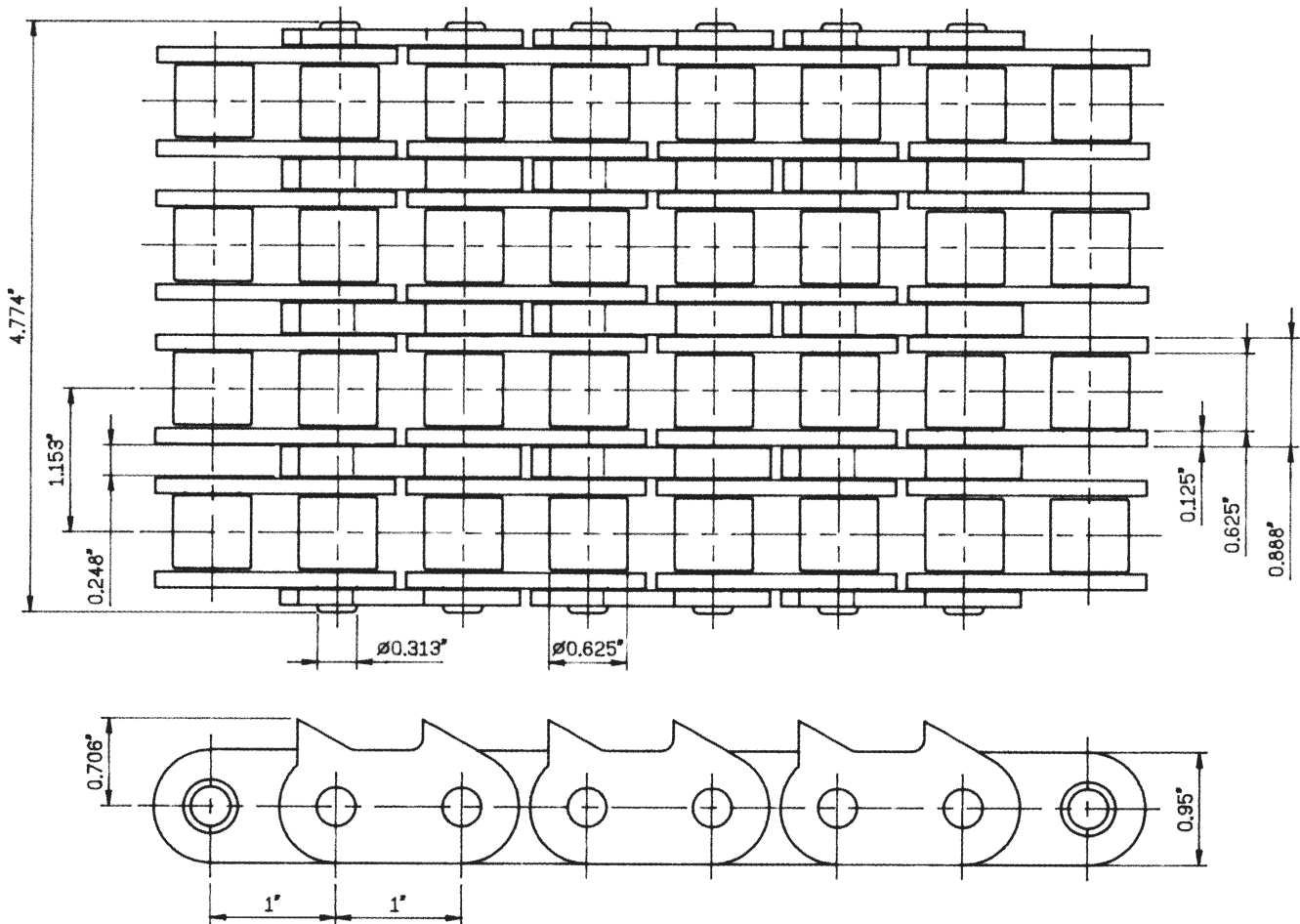
80R Quest™ SL E2LP



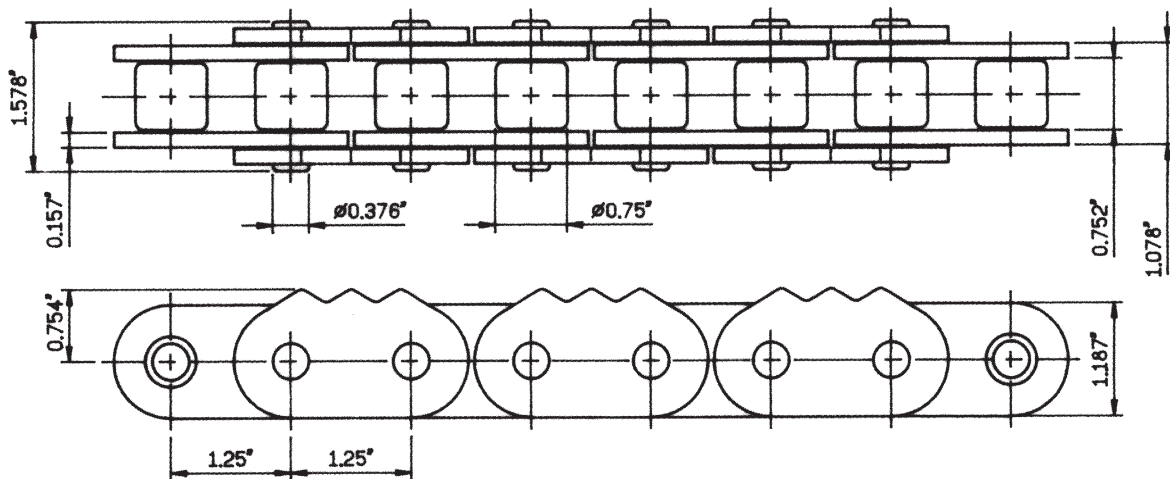
80-2R Quest™ SL E2LP



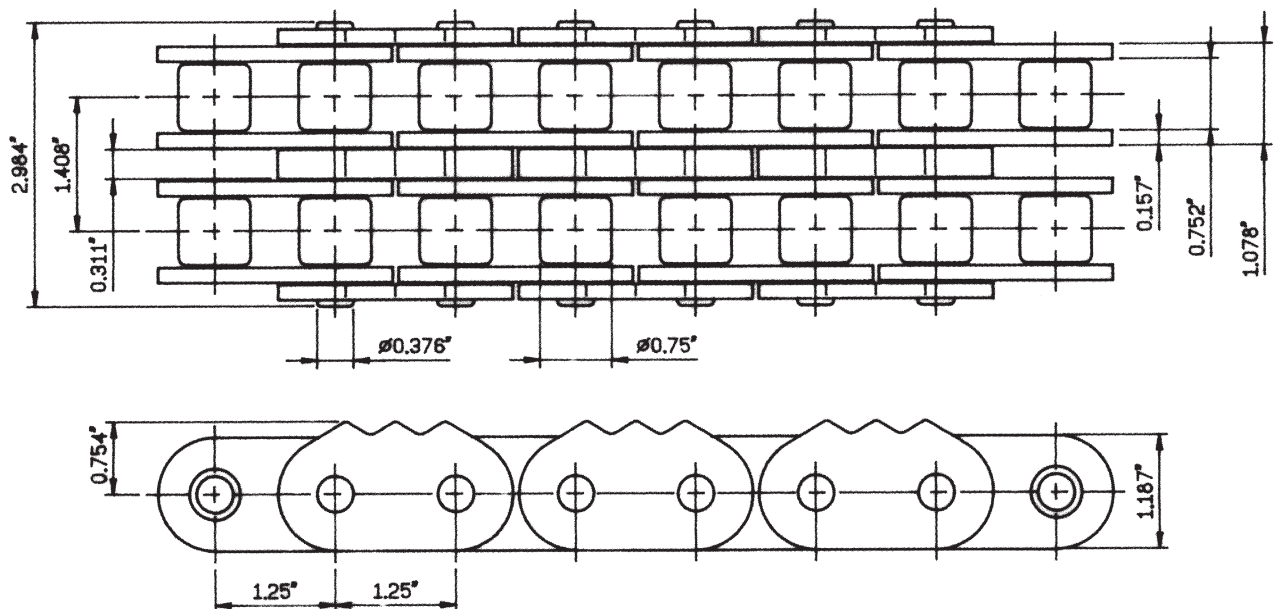
80-4R Quest™ SL E2LP



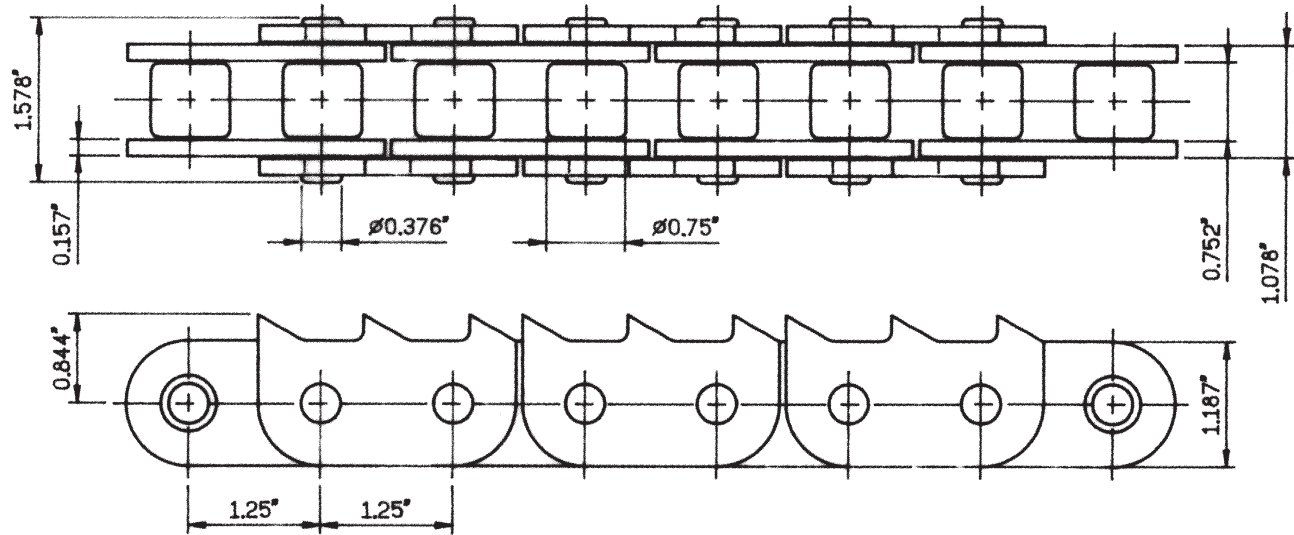
100R Quest™ 3P E2LP



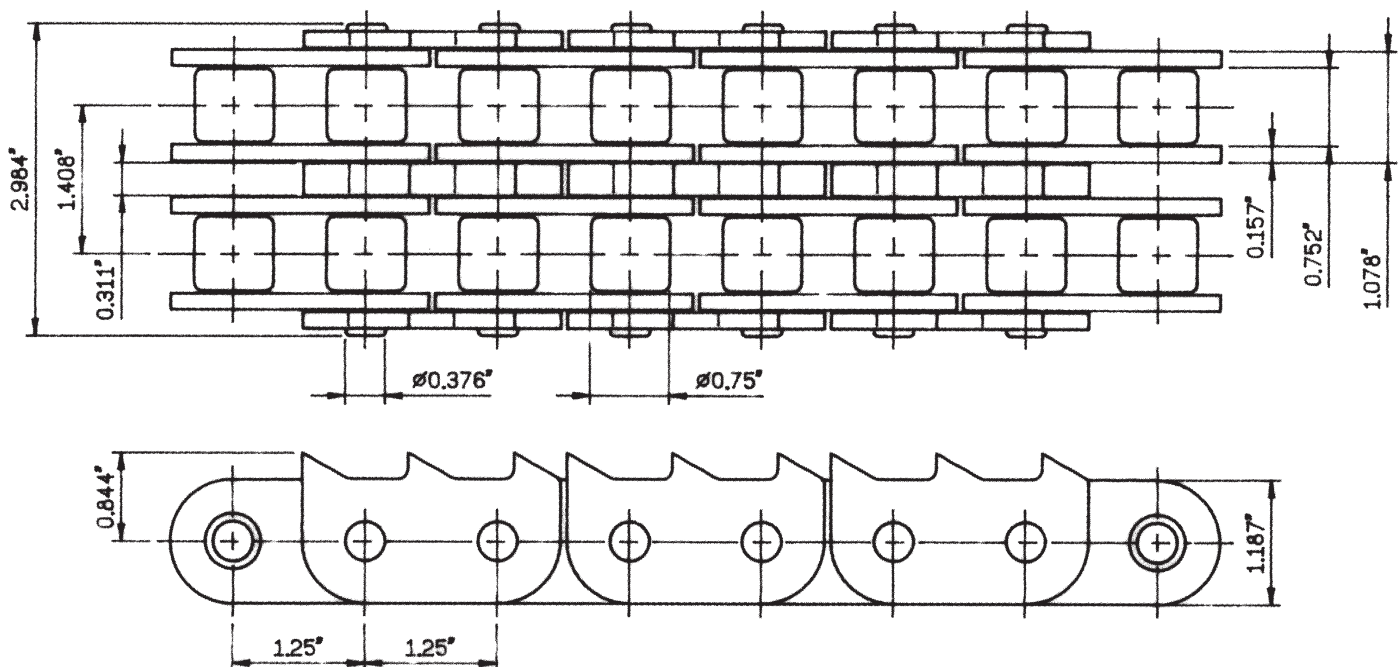
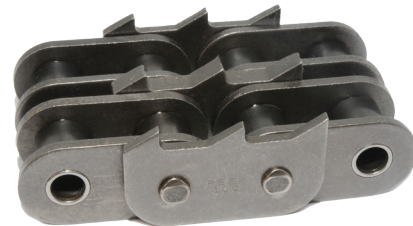
100-2R Quest™ 3P E2LP



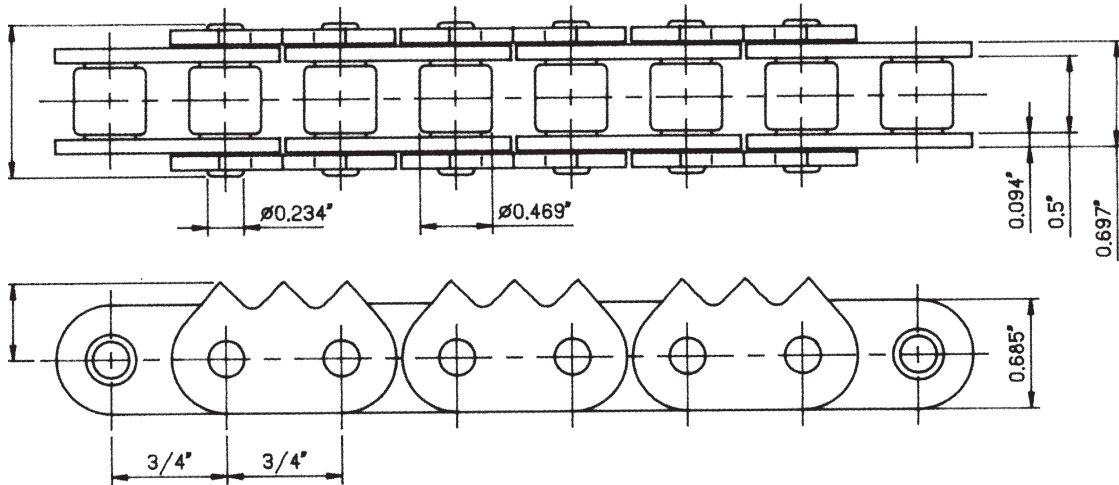
100R Quest™ SL E2LP



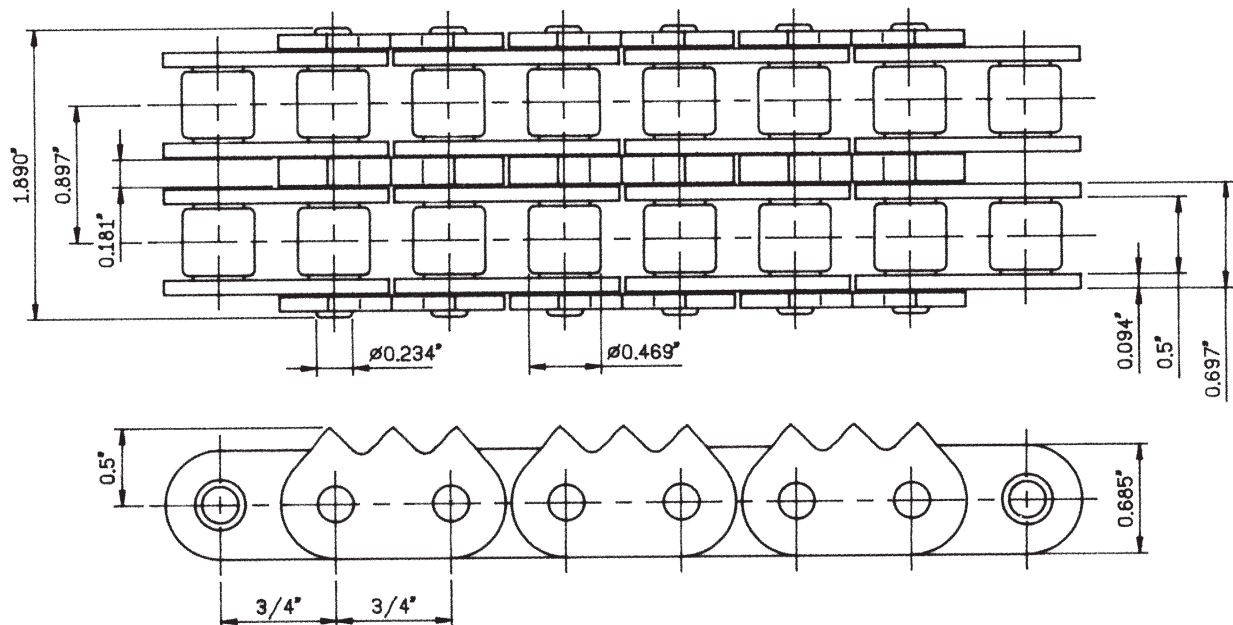
100-2R Quest™ SL E2LP



60R Quest™ 3P E2LP

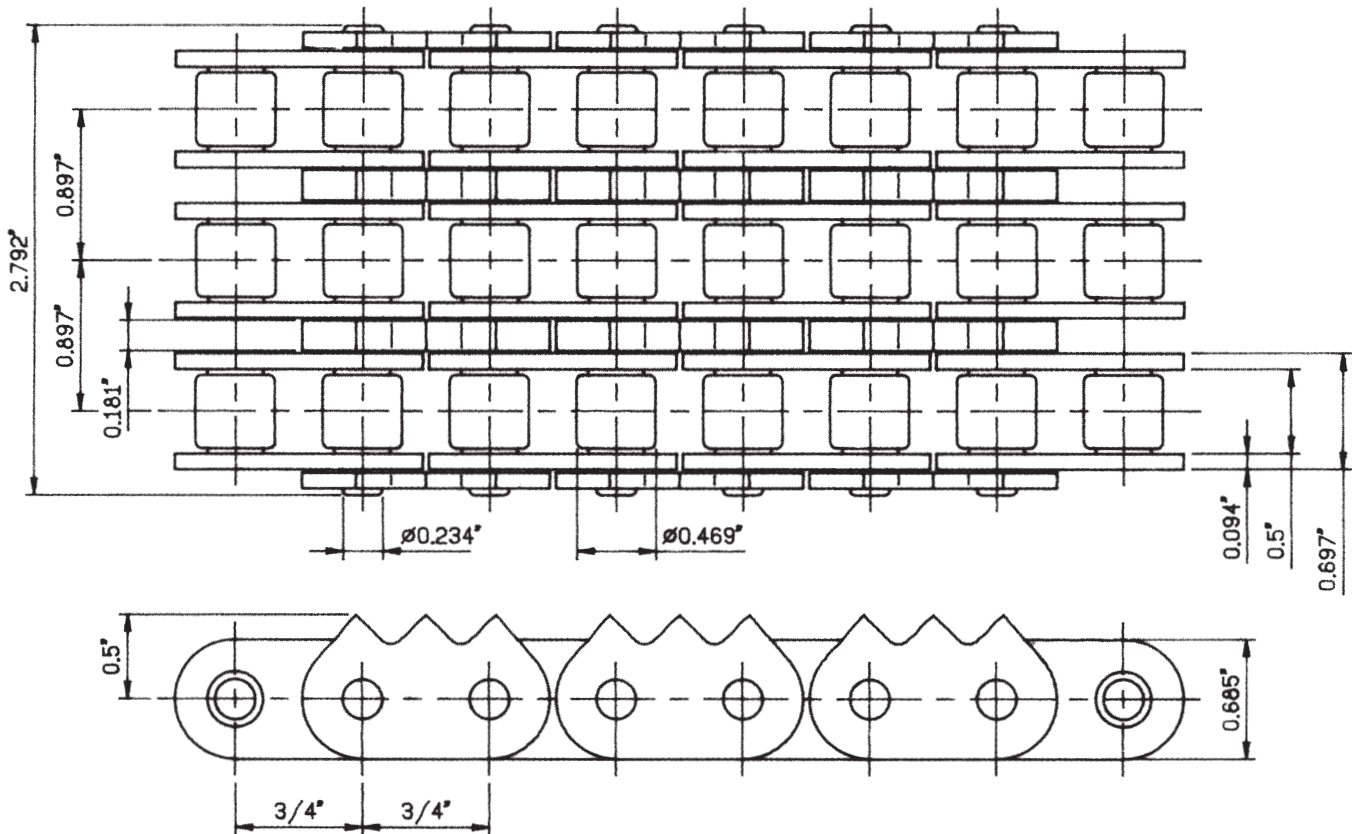


60-2R Quest™ 3P E2LP



PEER 60 Sharp Top Chain

60-3R Quest™ 3P E2LP



Specifications

PEER 80 Sharp Top Chain

| Chain No. | Page No. | Pitch | Roller Diameter | Width / Inner Plates | Pin Diameter | Pin Length | Transverse Pitch | Breaking Load |
|----------------------|----------|--------|-----------------|----------------------|--------------|------------|------------------|---------------|
| 80R Quest™ 3P EL | 5 | 1.000" | .625" | .625" | .312" | 1.400" | — | 17,500 lbs. |
| 80R Quest™ 3P E2LP | 6 | 1.000" | .625" | .625" | .312" | 1.400" | — | 17,500 lbs. |
| 80-2R Quest™ 3P E2LP | 6 | 1.000" | .625" | .625" | .312" | 2.540" | 1.153" | 35,000 lbs. |
| 80-3R Quest™ 3P E2LP | 7 | 1.000" | .625" | .625" | .312" | 3.690" | 1.153" | 52,500 lbs. |
| 80-4R Quest™ 3P E2LP | 7 | 1.000" | .625" | .625" | .312" | 2.830" | 1.153" | 70,000 lbs. |
| 80R Quest™ SL E2LP | 8 | 1.000" | .625" | .625" | .312" | 1.400" | 1.153" | 17,500 lbs. |
| 80-2R Quest™ SL E2LP | 8 | 1.000" | .625" | .625" | .312" | 2.540" | 1.153" | 35,000 lbs. |
| 80-4R Quest™ SL E2LP | 9 | 1.000" | .625" | .625" | .312" | 2.830" | 1.153" | 70,000 lbs. |



Specifications

PEER 100 and 60 Sharp Top Chain

| Chain No. | Page No. | Pitch | Roller Diameter | Width / Inner Plates | Pin Diameter | Pin Length | Transverse Pitch | Breaking Load |
|-----------------------|----------|--------|-----------------|----------------------|--------------|------------|------------------|---------------|
| 100R Quest™ 3P E2LP | 10 | 1.250" | .750" | .750" | .375" | 1.700" | — | 25,300 lbs. |
| 100-2R Quest™ 3P E2LP | 10 | 1.250" | .750" | .750" | .375" | 3.070" | 1.408" | 50,600 lbs. |
| 100R Quest™ SL E2LP | 11 | 1.250" | .750" | .750" | .375" | 1.700" | — | 25,300 lbs. |
| 100-2R Quest™ SL E2LP | 11 | 1.250" | .750" | .750" | .375" | 3.070" | 1.408" | 50,600 lbs. |

| Chain No. | Page No. | Pitch | Roller Diameter | Width / Inner Plates | Pin Diameter | Pin Length | Transverse Pitch | Breaking Load |
|----------------------|----------|-------|-----------------|----------------------|--------------|------------|------------------|---------------|
| 60R Quest™ 3P E2LP | 12 | .750" | .469" | .500" | .234" | 1.050" | — | 9,000 lbs. |
| 60-2R Quest™ 3P E2LP | 12 | .750" | .469" | .500" | .234" | 1.950" | .897" | 18,000 lbs. |
| 60-3R Quest™ 3P E2LP | 13 | .750" | .469" | .500" | .234" | 2.860" | .897" | 27,000 lbs. |

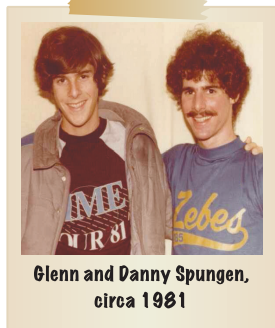




PEER CHAIN

Keeps You Running™

Toll Free: +1.800.523.4567
Phone: +1.847.775.4600
Fax: +1.847.775.4650
www.peerchain.com
sales@peerchain.com



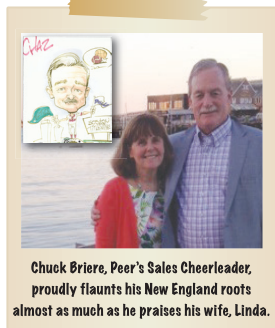
Glenn and Danny Spungen,
circa 1981

At Peer we are proud to be a family owned, personally-run company. My brother, Danny Spungen, and I spent our young summers and weekends on the Southside of Chicago, packing boxes, punching holes in papers for sales binders, running the postage meters, painting the Warehouse Racks "Peer Orange" and wearing trendy Peer Chain belts that eventually were confiscated at the Denver Airport in 1976. Our best memories of early adulthood were Saturdays when we were in the office and distributors called in need of "emergency" shipments. We would literally climb into the racks like monkeys, find the parts, pack them up with a handwritten note and drive them over to UPS¹. On Monday mornings the plant managers were always curious about "what kind of clean-up would be required from our acts of kindness."

During those early years we learned lots of lessons that formed Peer's heart and soul. Grandpa Nate and Uncle Oscar would always say, "when a customer calls saying they need their order tomorrow, we can come back and say of course...we always keep that around for you because we know you, and you always order the day before you need it!"

Loyalty counts a lot with us. To this day we continue being extremely sensitive to anticipating the needs of our customers, and as a result, stock our shelves with chain for a wide variety of industries. Perhaps it's time you give Peer Chain a try; where a handshake is better than a contract, inventory is deep for our partners, and relationships truly matter.

¹We still work this way though Danny, now V.P. Strategic Directions, and I aren't allowed on the shelves any more for safety reasons. The day before I wrote this a regular customer called at 5:30 CST needing 80 – 3HR x 10FT. Our warehouse manager picked the chain, packaged it for shipping and got it on our 6pm UPS truck. We still "Officially say" – same day shipment for orders received by 2 pm CST. I'm just saying, Loyalty always counts for a lot at Peer Chain.



Chuck Briere, Peer's Sales Cheerleader,
proudly flaunts his New England roots
almost as much as he praises his wife, Linda.

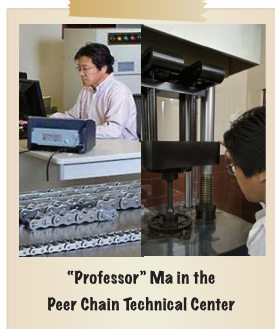
Chuck "The Colonel" Briere – Chuck is a retired U.S. Army reservist who has sold most major chain manufacturers' products virtually all his professional career. A habitual road warrior with the world's most supportive wife, Chuck has been on the distribution side as well as the manufacturing side. In 2013 Chuck decided to do something "wacky" and joined family-owned Peer Chain as Eastern Region Sales Manager. Four Months later, having passed the Spungen Sniff Test, Chuck was named Peer Chain National Sales Manager. We are considering changing his moniker to, "Up Versus Year Ago" because that's how it's been since Chuck joined Peer.

DISTRIBUTED BY:



Jeremy Fogo with wife, Anne Marie, celebrating
at Walt Disney World, Orlando, with Jeremy
and Kaitlyn during an earlier visit.

Jeremy Fogo – Product Manager, has been with PEER Chain for 17 years and knows the product line-up by heart. He works hand in hand with our customers sharing his vast knowledge of products and applications. That is the dedication you get from Jeremy, nearly two decades of service to PEER Chain's customers, distributors, attachés, and sales force. He brings the same thoroughness in upbringing his kids, often seen at the pool supporting his daughter who is an avid swimmer or helping his son nail parallel parking. Jeremy also knows where and when the lines at Disney are the shortest. Give him a call and experience the joy of being "Fogged". You will appreciate the way Jeremy can help "Keep You Running" and the way he helps so many others with PEER Chain genius products.



"Professor" Ma in the
Peer Chain Technical Center

Eric Ma, Engineering and Quality Manager, can also be called "The Professor". Eric holds 3 University Degrees: Material Science B.S.; Chemical Engineering M.S.; and a Computer Science M.S. Additionally, he is a Certified Professional in Supply Management. In many areas he wrote the programs which run warehouses, handle the supply chain and assure that our chains will truly keep you running. As you might expect, don't go against Eric in a game of Mahjong. But if you have a chain problem, Eric will find the solution for you. And he will do it with a smile.