

"You're Family -
You'll Get Them Fast!"
- Uncle Linc



PEER Attachments

When You Need Attachment Chain
Nobody Beats PEER Chain.

Unprecedented Attachment Options



Family Keeps You Running!™

**PEER Attachment Chains
Selection. Availability.
Value. Service.**

At PEER Chain, in our centrally located, Waukegan, Illinois, production facility, our automated cutting equipment combined with our assembly specialists can provide a wide variety of sizes and configurations with PEER quality you can depend on. That's why we've invested millions in new attachment chains. It's an unprecedented inventory that aligns with our family's fervent commitment to keep you up and running. No matter what!

**All Standard
ASME/ANSI Attachments
— Readily Available**

PEER Chain carries all standard ASME/ANSI attachments — readily available in single pitch, double pitch (extended pitch) — in both Carbon Steel and Stainless Steel manufactured to last, all priced to minimize costs. Engineered for a variety of industries and applications, our expansive attachment chain inventory allows you to choose the attachment chains most suitable to your operation. Need customized attachments? No problem. Just send us your specifications and we'll deliver the solution.





Need Attachment Chain Fast? No Problem!

When you need attachment chain fast, think PEER Chain. We'll do what's necessary to get you your attachment chain fast. And if you're in a really tight spot, we'll do all we can to get your attachment chain out the same day. That's our commitment to you – with PEER Chain we are all family. If it's what you need – it's what we do!

Attachment Chain Sizes and Types

PEER Chain stocks a broad inventory of attachment chains and components ready for rapid shipment.

SINGLE PITCH ROLLER CHAIN

Attachments for all Chains 35 - 160

Chain Attachment Description	PEER No.	Other Mfgs. No.
Bent Lug (<i>One Side, One Hole</i>)	A-1	A-1, B-1
Bent Lug (<i>Two Sides, One Hole</i>)	K-1	K-1, B-2
Straight Lug (<i>One Side, One Hole</i>)	SA-1	SA-1, M-35, M-1, S-1
Straight Lug (<i>Two Sides, One Hole</i>)	SK-1	SK-1, S-2, M-1, N-1
One Extended Pin on Pin Link	D-1	D-1, E-1, Ext. Pin
Two Extended Pins on Pin Link	D-3	D-3, E-2, Ext. Pins

DOUBLE PITCH ROLLER CHAIN

Attachments for all Chains C2040 - C2160H
& C2042 - C2162H

Chain Attachment Description	PEER No.	Other Mfgs. No.
Bent Lug (<i>One Side, One Hole</i>)	A-1	A-1, B-1, B-1-1
Bent Lug (<i>Two Sides, One Hole</i>)	K-1	K-1, B-2, B-2-1
Bent Lug (<i>One Side, Two Holes</i>)	A-2	A-2, B-1, B-1-2
Bent Lug (<i>Two Sides, Two Holes</i>)	K-2	K-2, B-2, B-2-2
Straight Lug (<i>One Side, One Hole</i>)	SA-1	SA-1, M-35, S-1, M-2, S-1-1
Straight Lug (<i>Two Sides, One Hole</i>)	SK-1	SK-1, M-1, S-2, S-2-1
Straight Lug (<i>One Side, Two Holes</i>)	SA-2	SA-2, M-2, M-35-2, S-1, S-1-2
Straight Lug (<i>Two Sides, Two Holes</i>)	SK-2	SK-2, M-2, S-2, S-2-2
One Extended Pin on Pin Link	D-1	D-1, E-1, Ext. Pin
Two Extended Pins on Pin Link	D-3	D-3, E-2, Ext. Pins

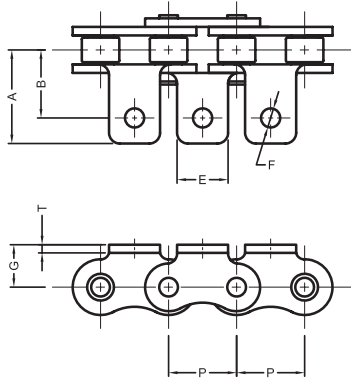


INTERCHANGEABILITY GUIDE

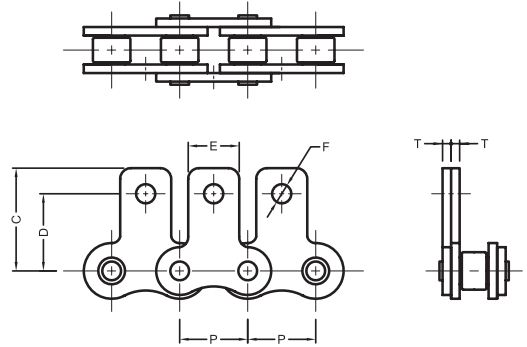


ASME/ANSI STANDARD SINGLE ATTACHMENTS

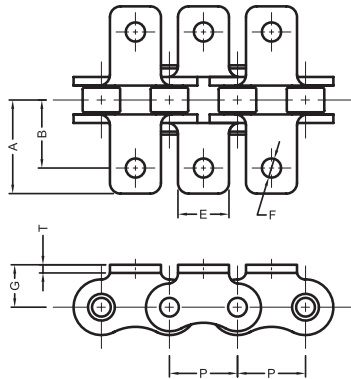
A-1 ATTACHMENT



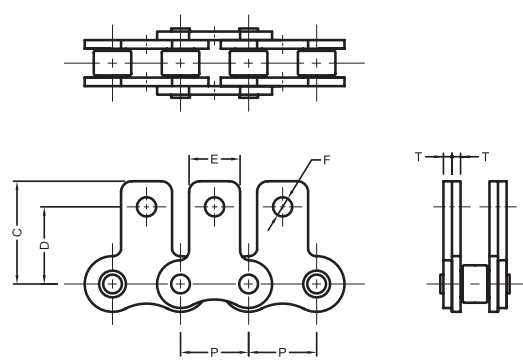
SA-1 ATTACHMENT



K-1 ATTACHMENT



SK-1 ATTACHMENT

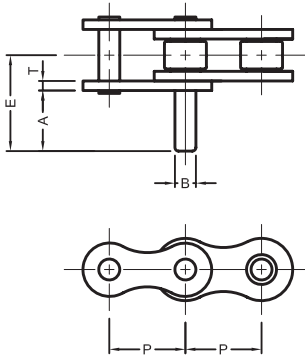


PEER Part No.	ANSI No.	Pitch P	A	B	C	D	E	F	G	T	Unit of Measure
35	35	0.375	0.516	0.375	0.531	0.375	0.313	0.109	0.250	0.050	in
40	40	0.500	0.688	0.500	0.688	0.500	0.375	0.141	0.312	0.060	in
41	41	0.500	0.641	0.469	0.648	0.500	0.375	0.141	0.281	0.050	in
50	50	0.625	0.969	0.625	0.963	0.625	0.562	0.203	0.406	0.080	in
60	60	0.750	1.094	0.750	1.031	0.719	0.625	0.203	0.469	0.094	in
80	80	1.000	1.547	1.000	1.339	0.969	0.750	0.266	0.625	0.125	in
100	100	1.250	1.693	1.250	1.648	1.250	1.000	0.328	0.781	0.156	in
120	120	1.500	2.087	1.500	1.958	1.438	1.125	0.391	0.906	0.187	in

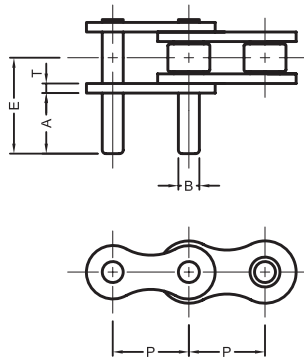


ASME/ANSI STANDARD SINGLE ATTACHMENTS

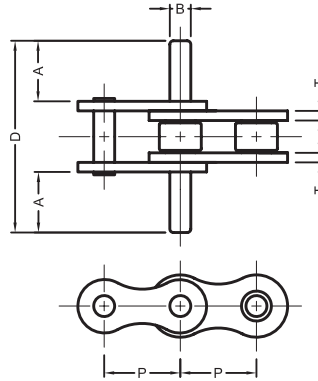
D-1 ATTACHMENT



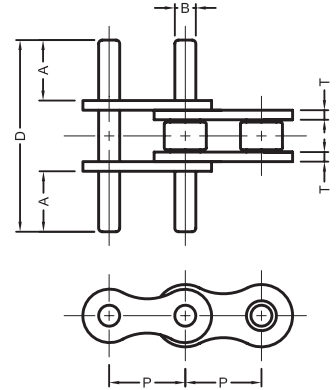
D-3 ATTACHMENT



D-D-1 ATTACHMENT



D-D-3 ATTACHMENT

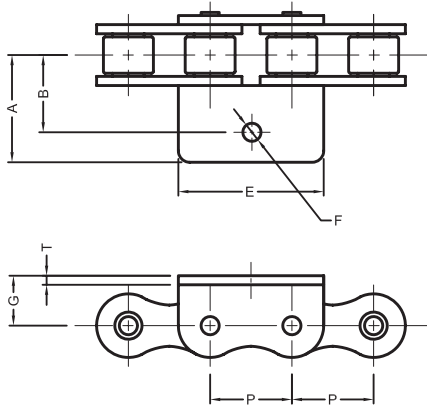


PEER Part No.	ANSI No.	Pitch P	A	B	D	E	T	Unit of Measure
35	35	0.375	0.375	0.141	1.150	0.575	0.050	in
40	40	0.500	0.375	0.156	1.322	0.661	0.060	in
41	41	0.500	0.375	0.141	1.216	0.608	0.050	in
50	50	0.625	0.469	0.200	1.654	0.827	0.080	in
60	60	0.750	0.562	0.234	2.036	1.018	0.094	in
80	80	1.000	0.750	0.312	2.670	1.335	0.125	in
100	100	1.250	0.937	0.375	3.296	1.648	0.156	in
120	120	1.500	1.125	0.437	–	2.024	0.187	in
140	140	1.750	1.312	0.500	–	2.264	0.218	in
160	160	2.000	1.500	0.562	–	2.654	0.250	in

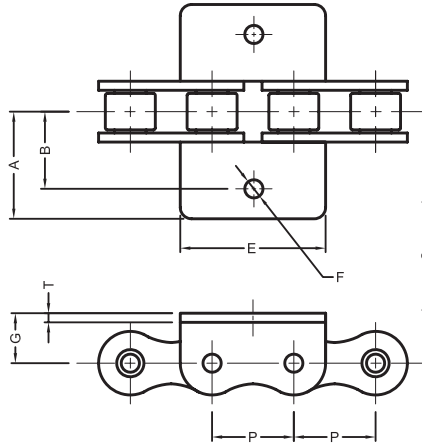


ASME/ANSI NON-STANDARD SINGLE ATTACHMENTS

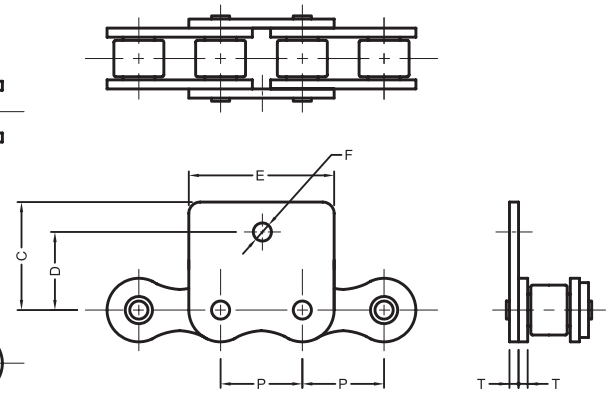
WA-1 ATTACHMENT



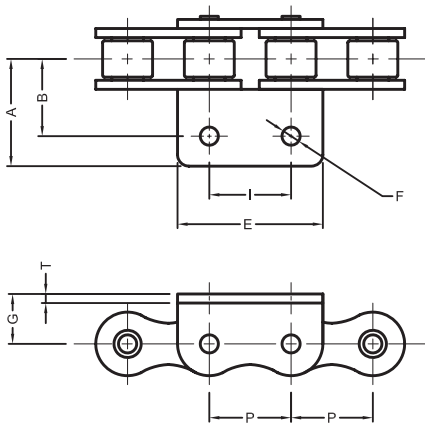
WK-1 ATTACHMENT



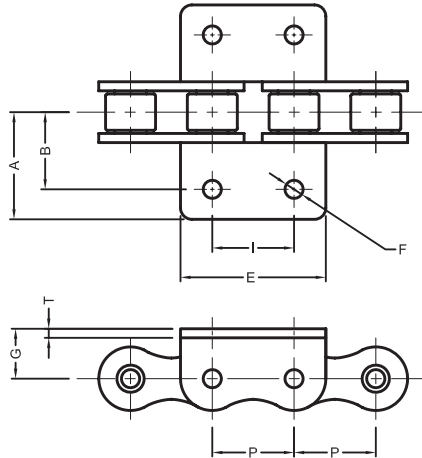
WSA-1 ATTACHMENT



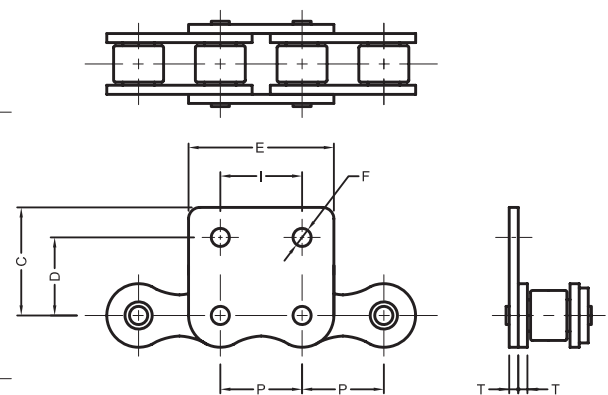
WA-2 ATTACHMENT



WK-2 ATTACHMENT



WSA-2 ATTACHMENT

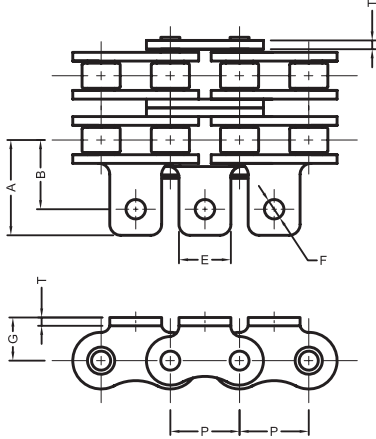


PEER Part No.	ANSI No.	Pitch P	A	B	C	D	E	F	G	T	I	Unit of Measure
35	35	0.375	0.563	0.375	0.578	0.375	0.722	0.109	0.250	0.050	0.375	in
40	40	0.500	0.687	0.500	0.681	0.500	0.909	0.141	0.312	0.060	0.500	in
50	50	0.625	0.969	0.625	0.980	0.625	1.120	0.203	0.406	0.080	0.625	in
60	60	0.750	1.063	0.750	1.024	0.719	1.427	0.203	0.469	0.094	0.750	in
80	80	1.000	1.390	1.000	1.344	0.969	1.915	0.266	0.625	0.125	1.000	in

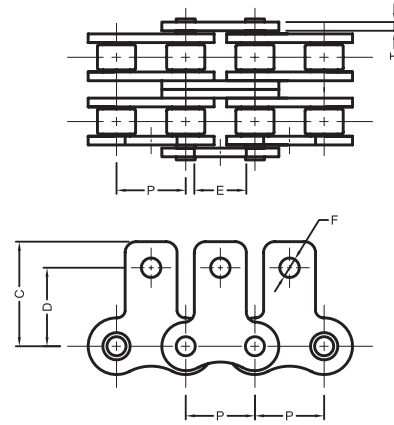


ASME/ANSI STANDARD DOUBLE STRAND ATTACHMENTS

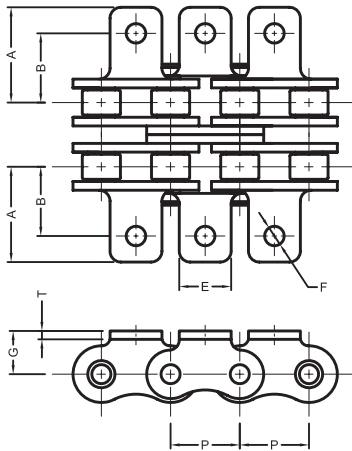
A-1 ATTACHMENT



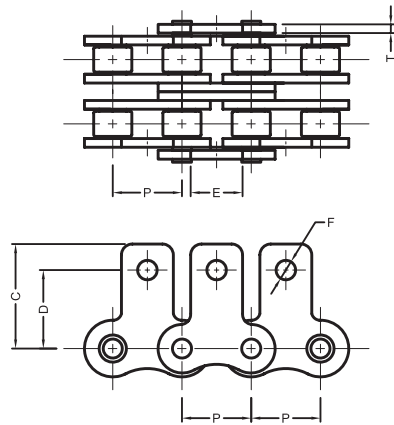
SA-1 ATTACHMENT



K-1 ATTACHMENT



SK-1 ATTACHMENT

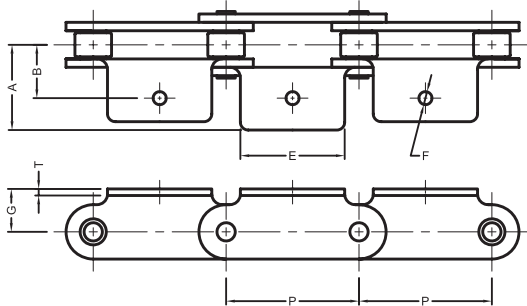


PEER Part No.	ANSI No.	Pitch P	A	B	C	D	E	F	G	T	Unit of Measure
35-2	35-2	0.375	0.516	0.375	0.531	0.375	0.313	0.109	0.250	0.050	in
40-2	40-2	0.500	0.688	0.500	0.688	0.500	0.375	0.141	0.312	0.060	in
50-2	50-2	0.625	0.969	0.625	0.963	0.625	0.562	0.203	0.406	0.080	in
60-2	60-2	0.750	1.094	0.750	1.031	0.719	0.625	0.203	0.469	0.094	in
80-2	80-2	1.000	1.547	1.000	1.339	0.969	0.750	0.266	0.625	0.125	in

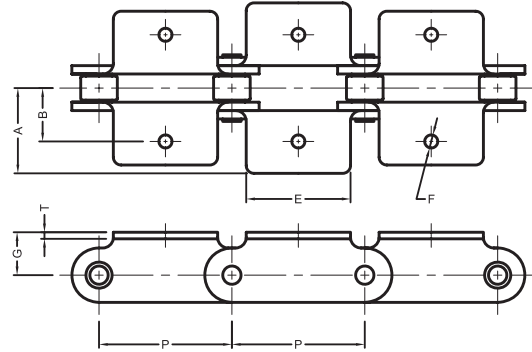


ASME/ANSI STANDARD DOUBLE PITCH ATTACHMENTS

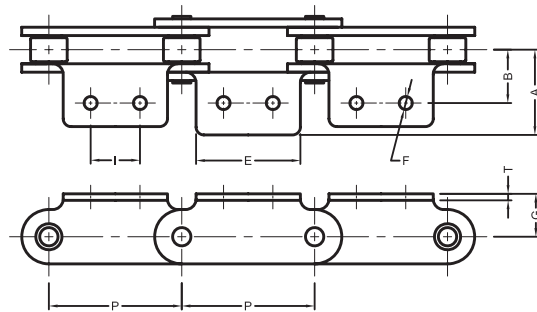
A-1 ATTACHMENT



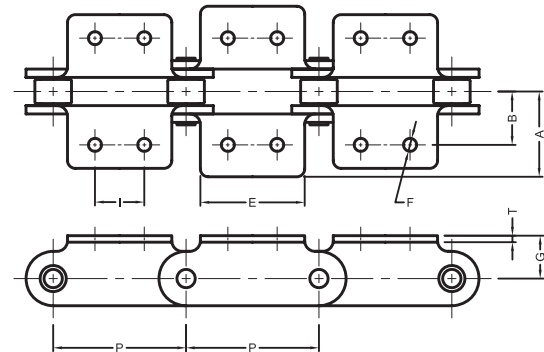
K-1 ATTACHMENT



A-2 ATTACHMENT



K-2 ATTACHMENT



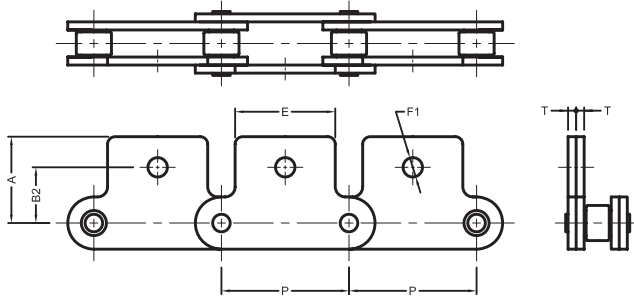
NOTE: Attachments can be supplied on Double Pitch Chain with Standard Rollers and Double Pitch Chain with Oversized Rollers. Attachments can be supplied in Carbon Steel, Nickel Plated, and Stainless Steel. Chain can be supplied with Carbon Steel and Delrin Rollers.

PEER Part No.	ANSI No.	Pitch P	A	B	E	F	G	T	I	Unit of Measure
C2040/ C2042	C2040/ C2042	1.000	0.742	0.500	0.750	0.141	0.359	0.060	0.375	in
C2050/ C2052	C2050/ C2052	1.250	0.945	0.625	1.000	0.203	0.437	0.080	0.469	in
C2060H/ C2062H	C2060H/ C2062H	1.500	1.203	0.844	1.125	0.203	0.578	0.125	0.563	in
C2080H/ C2082H	C2080H/ C2082H	2.000	1.516	1.094	1.500	0.266	0.750	0.156	0.750	in
C2100H/ C2102H	C2100H/ C2102H	2.500	1.965	1.313	1.875	0.328	0.922	0.187	0.937	in
C2120H/ C2122H	C2120H/ C2122H	3.000	2.390	1.562	2.250	0.391	1.094	0.218	1.125	in

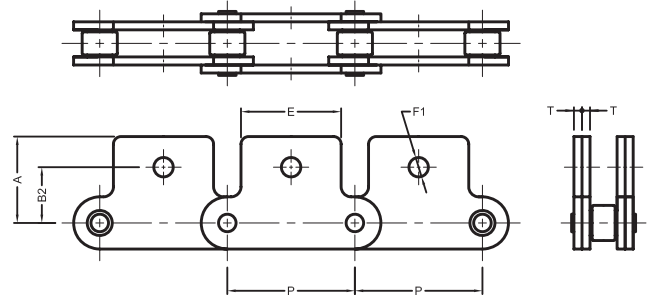


ASME/ANSI STANDARD DOUBLE PITCH ATTACHMENTS

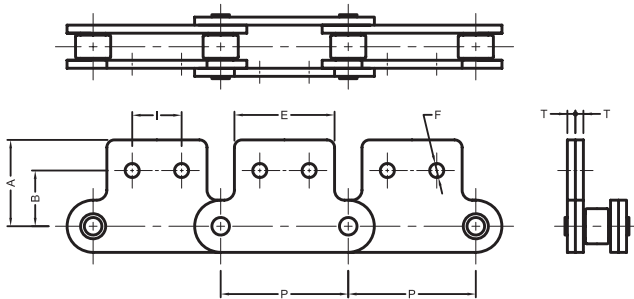
SA-1 ATTACHMENT



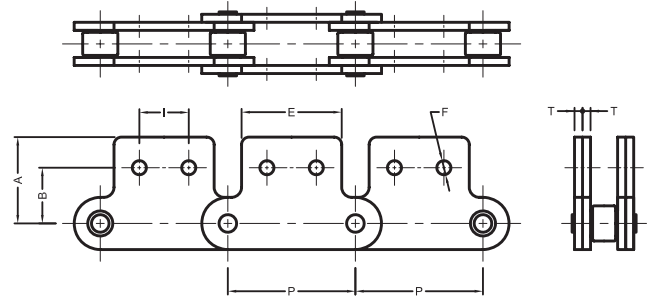
SK-1 ATTACHMENT



SA-2 ATTACHMENT



SK-2 ATTACHMENT



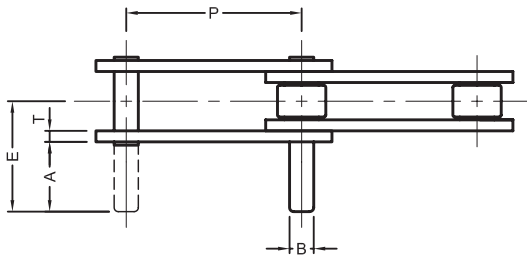
NOTE: Attachments available with Standard or Oversized Rollers

PEER Part No.	ANSI No.	Pitch P	A	B	B2	E	F	F1	T	I	Unit of Measure
C2040/ C2042	C2040/ C2042	1.000	0.759	0.531	0.437	0.750	0.141	0.203	0.060	0.375	in
C2050/ C2052	C2050/ C2052	1.250	0.969	0.625	0.563	1.000	0.203	0.250	0.080	0.469	in
C2060H/ C2062H	C2060H/ C2062H	1.500	1.172	0.750	0.687	1.125	0.203	0.328	0.125	0.563	in
C2080H/ C2082H	C2080H/ C2082H	2.000	1.500	1.000	0.875	1.500	0.266	0.391	0.156	0.750	in
C2100H/ C2102H	C2100H/ C2102H	2.500	1.984	1.250	1.125	1.875	0.328	0.516	0.187	0.937	in
C2120H/ C2122H	C2120H/ C2122H	3.000	2.359	1.469	1.313	2.250	0.391	0.578	0.218	1.125	in

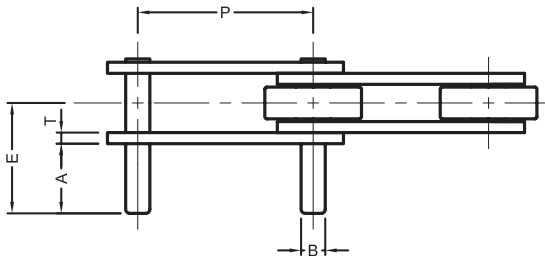


ASME/ANSI STANDARD DOUBLE PITCH ATTACHMENTS

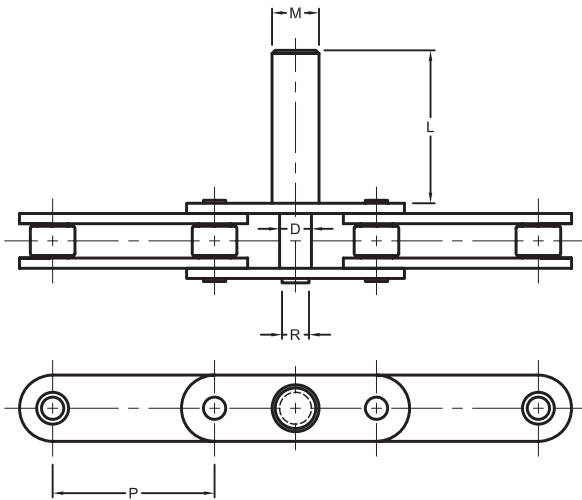
D-1 ATTACHMENT



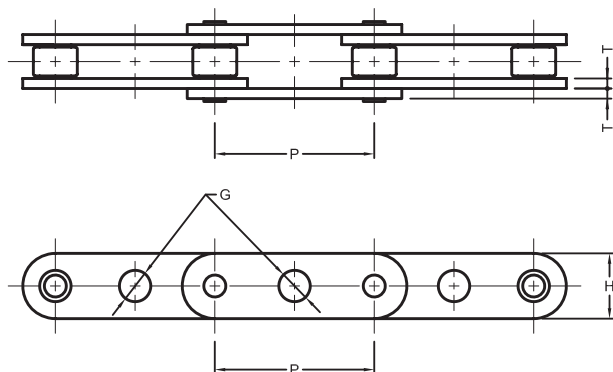
D-3 ATTACHMENT



D-5 ATTACHMENT



G-1 ATTACHMENT



PEER Part No.	ANSI No.	Pitch P	A	B	T	E	Unit of Measure
C2040/ C2042	C2040/ C2042	1.000	0.375	0.156	0.060	0.661	in
C2050/ C2052	C2050/ C2052	1.250	0.469	0.200	0.080	0.827	in
C2060H/ C2062H	C2060H/ C2062H	1.500	0.562	0.234	0.125	1.080	in
C2080H/ C2082H	C2080H/ C2082H	2.000	0.750	0.312	0.156	1.398	in
C2100H/ C2102H	C2100H/ C2102H	2.500	0.937	0.375	0.187	1.713	in
C2120H/ C2122H	C2120H/ C2122H	3.000	1.125	0.437	0.218	2.058	in

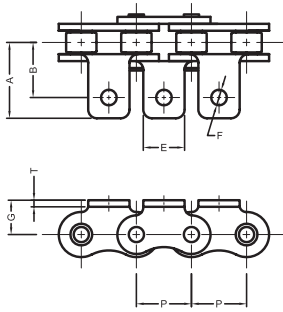
PEER Part No.	ANSI No.	Pitch P	L	M	R	D	Unit of Measure
D-5-A	D-5-A	1.500	1.625	0.500	0.318	0.313	in
D-5-B	D-5-B	1.500	1.625	0.562	0.309	0.303	in
D-5-C	D-5-C	1.500	1.625	0.500	0.318	0.218	in

PEER Part No.	ANSI No.	Pitch P	T	G	H	Unit of Measure
C2060H G1-A	C2060H G1-A	1.500	0.125	0.254	0.683	in
C2060H G1-B	C2060H G1-B	1.500	0.125	0.315	0.683	in
C2060H G1-C	C2060H G1-C	1.500	0.125	0.317	0.683	in
C2060H G1-D	C2060H G1-D	1.500	0.125	0.330	0.683	in
C2060H G1-E	C2060H G1-E	1.500	0.125	0.377	0.683	in
C2080H G1-A	C2080H G1-A	2.000	0.156	0.315	0.935	in
C2080H G1-B	C2080H G1-B	2.000	0.156	0.330	0.935	in

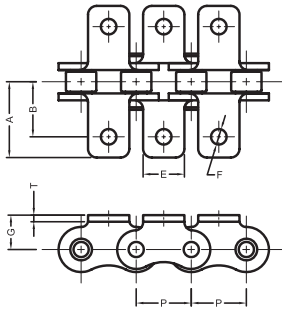


ISO BRITISH STANDARD ATTACHMENTS

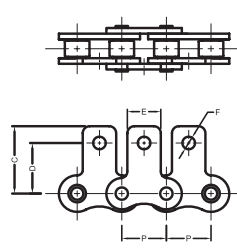
A-1 ATTACHMENT



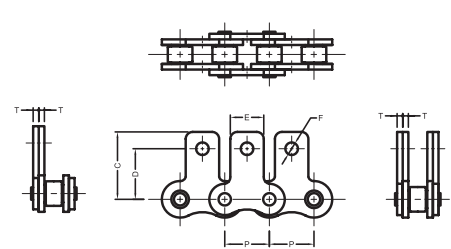
K-1 ATTACHMENT



SA-1 ATTACHMENT

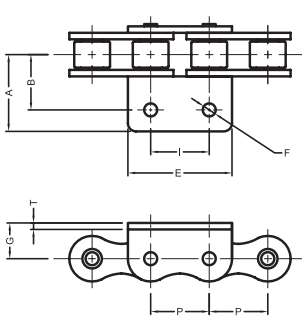


SK-1 ATTACHMENT

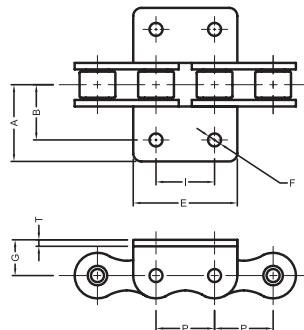


PEER Part No.	ANSI No.	Pitch P	A	B	C	D	E	F	G	T	Unit of Measure
06B	06B	0.375	0.531	0.375	0.531	0.769	0.315	0.138	0.256	0.049	in
08B	08B	0.500	0.717	0.500	0.744	0.525	0.433	0.169	0.350	0.059	in
10B	10B	0.625	0.878	0.625	0.904	0.650	0.562	0.209	0.406	0.064	in
12B	12B	0.750	1.031	0.750	1.125	0.844	0.625	0.252	0.530	0.070	in
16B	16B	1.000	1.429	1.000	1.339	0.911	0.750	0.252	0.625	0.124	in

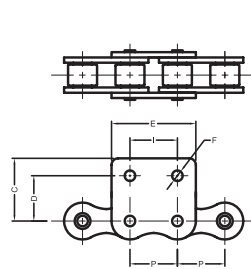
WA-2 ATTACHMENT



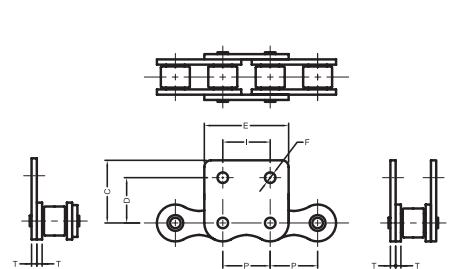
WK-2 ATTACHMENT



WSA-2 ATTACHMENT



WSK-2 ATTACHMENT



PEER Part No.	ANSI No.	Pitch P	A	B	C	D	E	F	G	T	I	Unit of Measure
08B	08B	0.500	0.717	0.500	0.744	0.526	0.963	0.169	0.350	0.059	0.500	in
10B	10B	0.625	0.878	0.625	0.903	0.650	1.204	0.209	0.406	0.064	0.625	in
12B	12B	0.750	1.031	0.750	1.126	0.844	1.385	0.252	0.530	0.070	0.750	in
16B	16B	1.000	1.429	1.000	1.339	0.914	1.815	0.252	0.625	0.124	1.000	in



Glenn Danny

Glenn Spungen, President

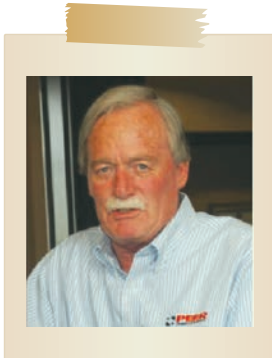
"Smart companies recognize the harmony between the employee and the customer. When you take care of one, you take care of the other. At PEER we take care of both with equal measure — because this is how lasting relationships work. And relationships are our passion."

Glenn describes himself as an average guy with no unique talents. Kind of funny coming from someone who spent 27 years in sales and operations for a well-recognized global company. Since 2012, Glenn has been President of PEER Chain. He is a graduate of the Kelley School of Business at the University of Indiana. Glenn believes in transparent leadership and treating others — employees and customers alike — the way he would like to be treated. He also believes in making PEER the definitive chain solution for the customer — both in terms of product availability and customer support. Happily married since 1991, Glenn and his wife have three wonderful children, and in his spare time he enjoys Chicago Blackhawks hockey, travel, cycling, golf, and gardening.

Danny Spungen, Vice President Strategic Marketing

"Creativity in business is a game changer and a differentiator, whether you're selling cars, cheese, or chain!"

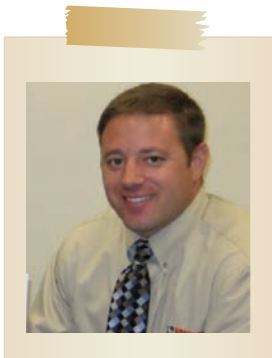
Danny Spungen is power transmission! It's in his DNA. Also in his DNA is a passion for teamwork and developing innovative and creative ways to go to market, as well as building mutually beneficial lasting relationships. Danny has been part of the PEER Chain family since working summers during college. He's been fulltime since 1983. Danny is also passionate about philanthropy, World War II history, and an array of collectibles, including sports cards, stamps, Hot Wheels, and coins. When you visit PEER, don't be surprised if you are greeted by one of Danny's dogs or meet one of the 11 Rotary Club foreign exchange students his family has hosted over the years. Danny has a very big vision of "family".



Chuck Briere, National Sales Manager

"Family, family, family. What else is there to say?"

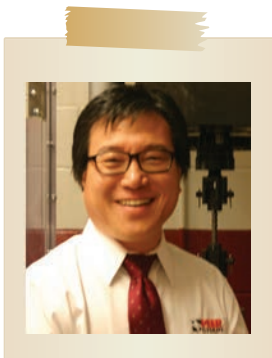
What do you say about a guy who has been in the bearing and power transmission business for over 40 years? Yes, besides being a little crazy! But here's the thing. Chuck loves selling chain, and he loves working at PEER. Why? Because chain is a technical product, and he enjoys the science of it. And PEER is like a family — a family with principals, who have principles, personality, and character. Moreover, PEER is dedicated to seeing its customers succeed as well as its industry grow. When Chuck isn't moving chain, he's attending his grandsons' baseball, soccer and hockey games, reading, taking walks with his wife, Linda, who he has been with just as long as he's been in this business. Oh, and here's something else pretty cool about Chuck. Now a retired Colonel, Chuck served his country for 35 years in the Army Reserve, where he learned that people are and always will be our greatest asset.



Jeremy Fogo, Product Manager

"Treat others with kindness and respect, the rest will take care of itself."

A consummate people person, Jeremy finds the work he does with his PEER customers incredibly rewarding. Being able to solve challenges for the PEER customer is something that gets Jeremy out of bed each morning, and he loves the culture and network of talented individuals with whom he works. Jeremy joined PEER Chain in 1997 as a Regional Sales Manager. He was then VP of Sales before assuming his current role of Product Manager. When he isn't solving power transmission conundrums, Jeremy is all about his family. He and his wife have two teenagers who together love to travel, especially to Disney World. He also enjoys classic muscle cars and the great outdoors.



Eric Ma, Manager of Engineering & Quality

"Delivering nothing less than precision to the PEER customer is off the table."

A more befitting title could not be given to Eric, unless it was to also include something about his strength of character. Engineering and quality is what Eric lives, breathes, and embodies day in and day out. Since coming to PEER in 2010, he has thrived in his role because of his intellect, dedication, and motivation. Eric loves the family-owned business environment and leadership at PEER, and finds it to be the perfect platform for exercising his knowledge and experience of the power transmission industry. Eric holds a B.S. in Material Science, an M.S. in Chemical Engineering, and another M.S. in Computer Science. And if that weren't enough, he also is a Certified Professional for Supply Management (CPSM). When he isn't developing precision chain solutions for our customers, Eric enjoys time with his wife and teenage son, as well as music and sports.

DISTRIBUTED BY:

